

150 Best Terrace and Balcony Ideas



Irene Alegre

150 Best Terrace and Balcony Ideas





CONTENTS

INTRODUCTION

TERRACES

Shore Vista Boat Dock
Casa en Playa Palabritas
Abo House
Leaf House
Courtyard Garden
Randwick
Randwick II
Contemporary Bauhaus on the Carmel
Eos
Wiston Gardens
Santa Maria
Maison Bioclimatique
Casa 6
Casa a Rayas
La Boyita
Elwood House
Summit Drive
House in Estoril
Majadahonda
Mhouse
Axial Symphony
Prototype
Soto Moraleja
Villanueva
Casa C-24
Guijo
Steel Study
São Bento Residence
Open Box House
House in Campos
Casa Palillos E-3
Pacific Heights Town House
Bahia House
Dovecote Barn
House Lam
Pretty Beach House

ROOF GARDENS

City Rooftop
City Penthouse
Marinka
Regent's Park
Barrio Salamanca
Water Street House
SoHo Terrace
Almanzora
Filadelfia Corporate Suites
Casa en Las Dolomitas
2 Bar House
Ivy Street Roof Garden
Greenwich Roof Garden

PATIOS

House Like a Museum
Annie Residence
Cascading Creek House
House with Three Gardens

BALCONIES

Clarendon
31 Blair Road
Sky Garden House
Pacific Heights Victorian
Ático en U
Gramercy Town House
Casa CG
Curraghbeena Road House
Sustainable Wood House in Antony
Static Quarry
Nakahouse
Vila Castela

ACCESSORIES

DIRECTORY

Copyright
About the Publisher

Introduction

From time immemorial, outdoor spaces have been essential parts of a house. Three hundred years ago, the most privileged spent much of their free time strolling through the gardens on their property, and they gave high priority to enjoying the outdoors as a way to improve health.

Today, most homes have outdoor spaces that their owners can use for the activities they find most agreeable and interesting, including barbecues, enjoying a pool or a hot tub, sunbathing, eating, or playing and chatting late into the night. The inhabitants of houses decorate and fit out outdoor areas to meet their particular needs. It is also increasingly common in large cities for skyscrapers to be topped by spectacular roof gardens or adorned with balconies that can be used to escape and forget the hustle and bustle of the metropolis and that add greenery to a gray horizon.

Few spaces in a home are more usable and rewarding than those that allow us to enjoy the outdoors, especially if the temperature is pleasant. It was for this reason that we decided to prepare a book on terraces, patios, and balconies, to take inspiration from the latest trends and learn to apply them to our own outdoor spaces by tailoring them to our preferences and means.





Terraces



Shore Vista Boat Dock

Architect: **Bercy Chen Studio**

Location: **Lake Austin, TX, USA**

Photography: **Paul Bardagjy**

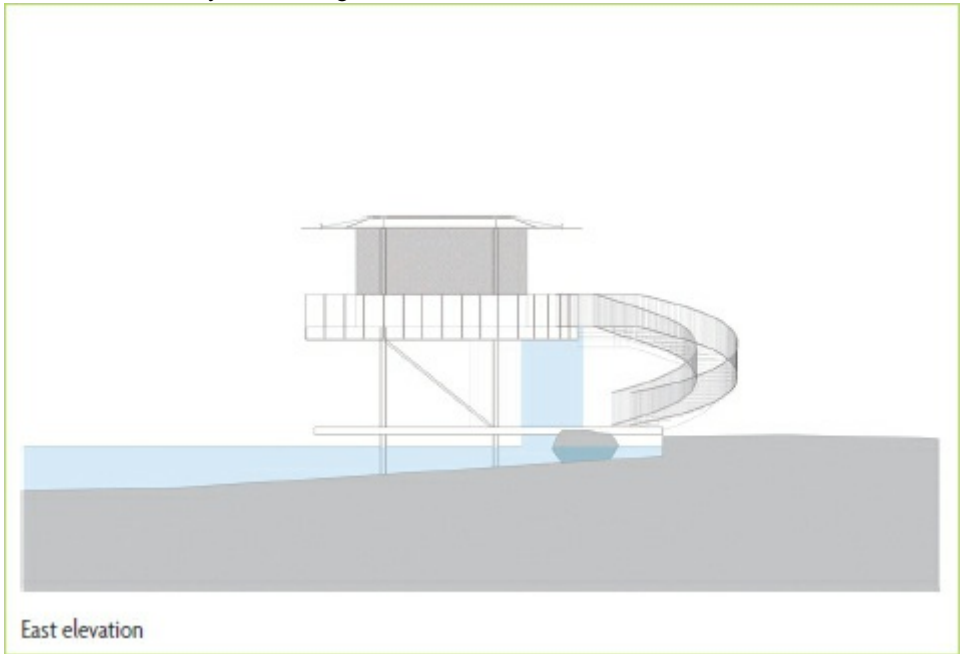
This curious house, located on the edge of Lake Austin, has an original circular structure that is complemented by the undulating hills, thus highlighting the landscape that surrounds it. The curve of the staircase emphasizes the geometrical shape of the house even more. The house blends in with the area and becomes another feature of the landscape.





001

In the large outdoor areas, shadows create spaces that can be used throughout the day, depending on the time and the intensity of the sunlight.







002

The waterfall creates a link between the house and the lake.



003

In this oval space, the seating follows the contour of the large window. The backs of the chairs, the armchair, the center table, and the fan emphasize the elliptical shape of the viewing point.





Casa en Playa Palabritas

Architect: **Metrópolis**

Location: **Lima, Peru**

Photography: **Elsa Ramírez** The house was designed to create a frame for the view of the beach and the islands in front of it. The aesthetic of the house celebrates the summer, with modern curves that call to mind the Brazilian architecture of the 1960s. The house has a white finish with color accents in red. The dining and living rooms are placed so they can be integrated with the terrace by simply sliding the glass doors.





004

One side is decorated with a concrete lattice that allows light to enter without forgoing privacy.



005

The edges and rounded forms that dominate the whole house soften the geometric and cubic lines of its architectural structure. The various components bring coherence and unity.







006

The bedrooms have access to this interior patio, which is simple and spectacular in the bareness of its forms and decorations.





Abo House

Architect: **Nico van der Meulen**

Location: **Louis Trichardt, South Africa** Photography: **David Ross**

This house derives from an outdated original residence with small windows and an unattractive façade, which meant it needed remodeling. Large windows that can be opened and closed were added, and the overly long hallway that led to the bedrooms was removed. The local climate is very hot, especially during the summer, so they placed smart windows that can control the amount of light that enters the house.





007

The house is surrounded by water features that help humidify the air in the hottest months.





008

The outdoor furniture is combined with the furniture inside the house to create a sense of unity and consistency in which stridency has no place.



Floor plan







The pool is located between two spaces: indoor and outdoor.

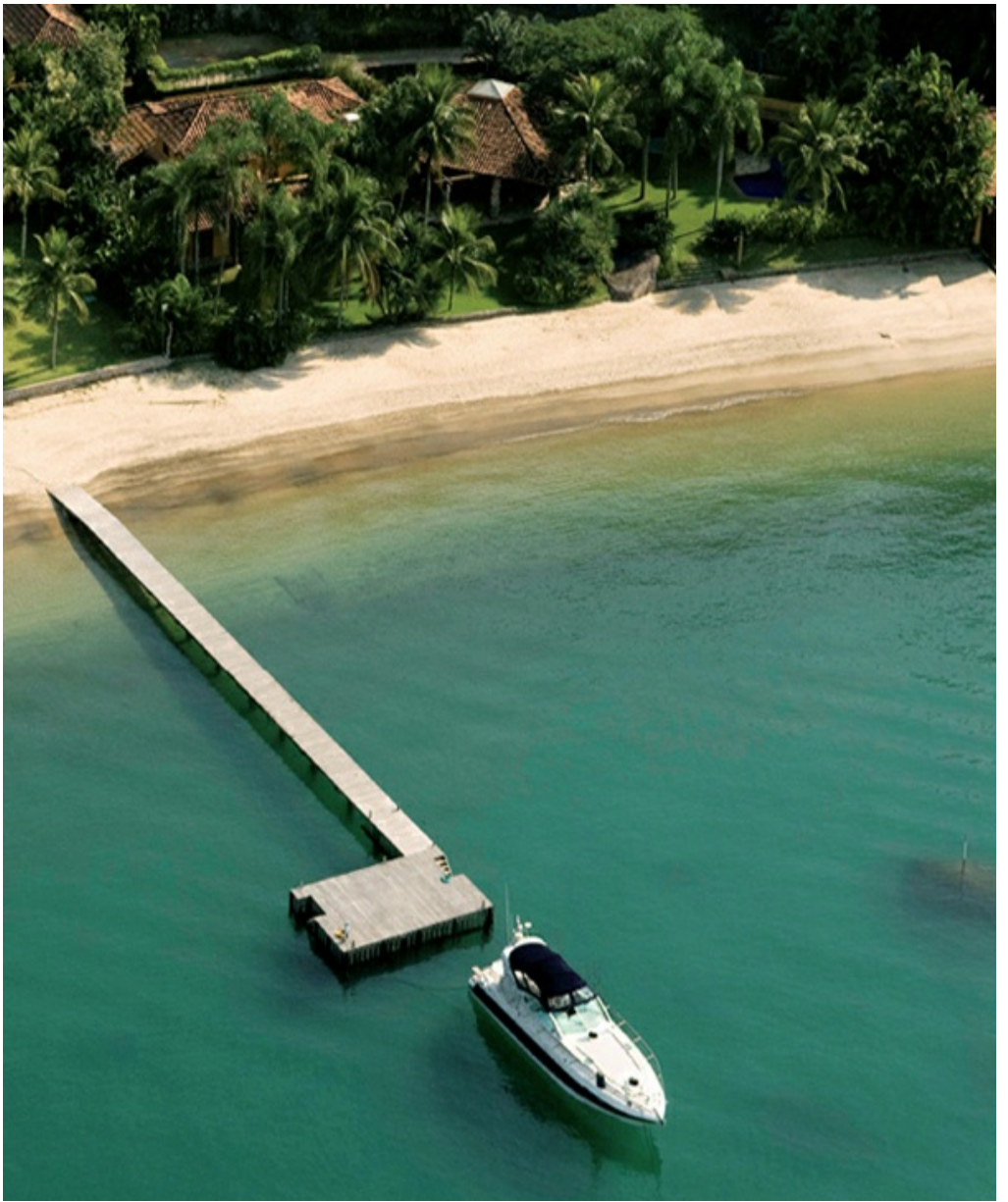
Leaf House

Architect: **Mareines + Patalano Arquitetura**

Location: **Angra dos Reis, Rio de Janeiro, Brazil**

Photography: **Mareines + Patalano Arquitetura**

The roof of this house in Brazil is the main focus of its architectural structure, and it is this feature that provides it with a practical, self-sufficient cooling system. There are no corridors between the rooms, and social areas are sited in semi-open zones. The varying ceiling heights create breezes to counteract the humid and extremely hot local climate.

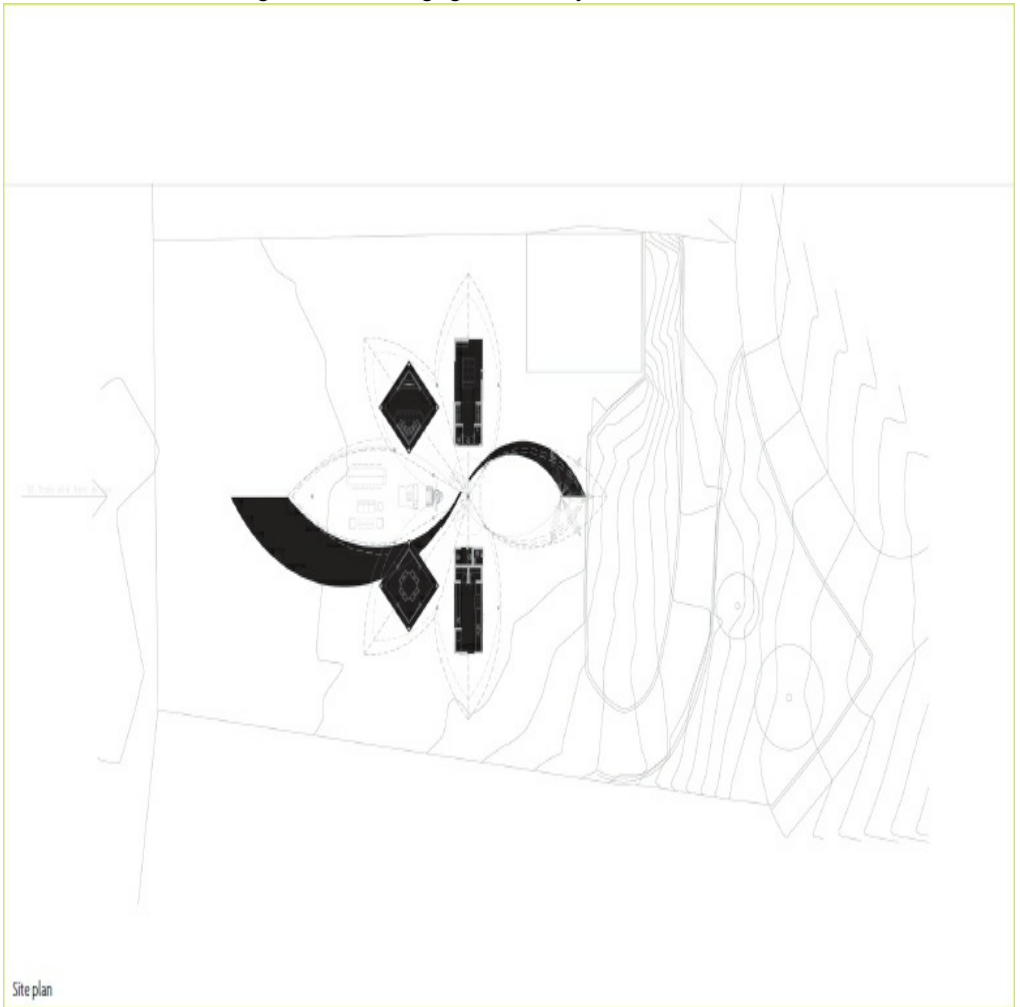






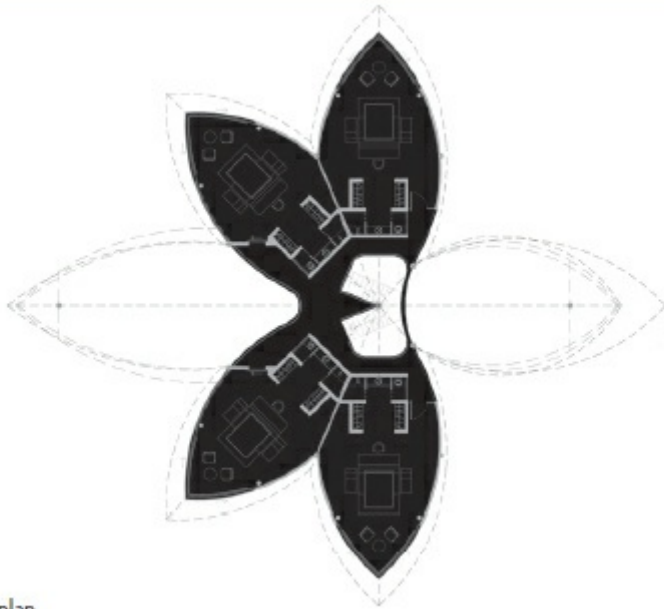
009

The roof imitates the petals of a flower and is inspired by Brazil's Indian architecture. It protects the house from excessive sunlight while allowing light in sideways to illuminate the rooms.



010

Palm trees need sun and need to be surrounded by vegetation. Their damaged leaves and branches require pruning from time to time, and they have to be repotted every two or three years.



Second floor plan



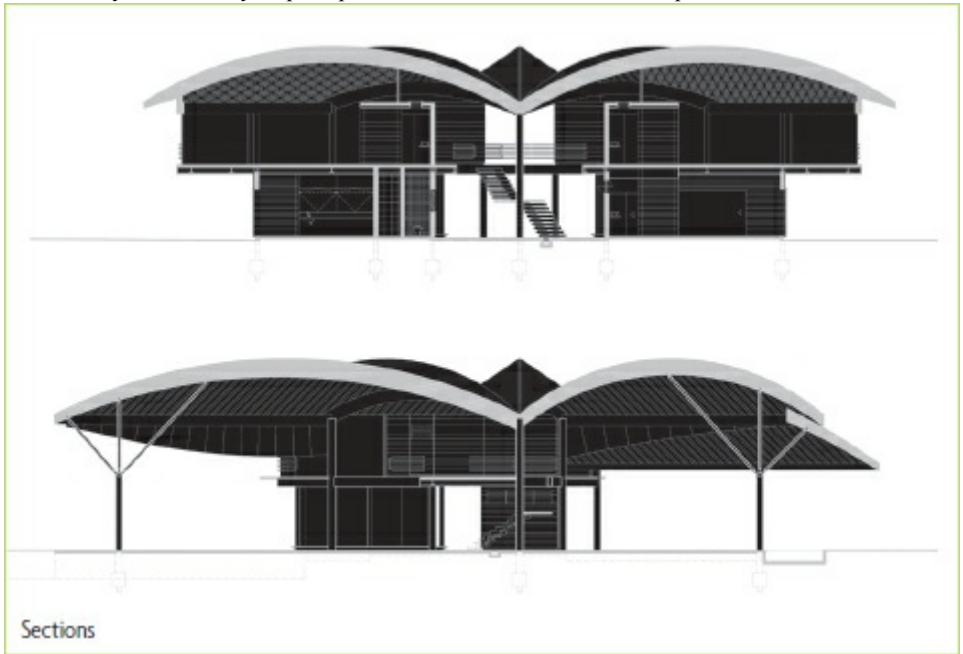
On the terrace, a curious curvilinear pool enters the house. The pool also snakes down to a jetty leading out into a lake.





012

Hammocks are very commonly used in hot climates and are ideal for taking a good afternoon nap outdoors. They are also easy to put up and are economical and lend a tropical feel to a terrace.





Courtyard Garden

Landscape design: **Roberto Silva Landscapes (Roberto Silva)** Location: **London, United Kingdom**

Photography: **Roberto Silva**

This small, romantic courtyard is divided into two areas. On thin wooden decking a white table with a matching parasol presides over the space closest to the house. Across the yard, potted flowers gracefully decorate the entrance to a small studio. A wrought-iron bench that has been painted white adds a touch of nostalgia.





The creepers that tumble down the walls simply and effectively beautify the patio. Make sure that the ivy grows in a shady spot, as it does not do well in excessive light.



014

Ceramic pots are porous, which makes moisture levels easier to control. Also, they do not get as hot as plastic pots.



015

The wrought-iron shelf and bench go well together, and the white flowers help the combination of the two colors to work.





Randwick

Landscape design: **Secret Gardens of Sydney** Location: **Sydney, Australia**

Photography: **Peter Brennan**

This house, designed for a large family, meets the needs of its residents in its 2,874 sq. ft. (267 m²). A number of levels were created on the terrace by using timber platforms, steps, and built-in seats. A striking water feature stands next to the entrance in the front garden. There are several playful aspects to the space, including a plant passageway designed for children's car racing.





016

The toys are tough and resistant to rain. The blue and red colors match the cushions on the bench and are not out of place in spite of their proliferation.







The spectacular water feature at the entrance adds elegance to the space, and its simple white lines relax visitors and do not overly decorate.



Randwick II

Landscape design: **Secret Gardens of Sydney** Location: **Sydney, Australia**

Photography: **Jason Busch**

This terrace with pool is located in the middle of the city. Ornamental pears and jasmine take center stage in this space. The family that lives in the house makes full use of the space, which has a pool, barbecue, and herb garden. The side entrance is a wall of green bamboo, which provides a beautiful view from the living areas of the house.





Despite the greenery, the most prominent color in this space is turquoise. This is due to the great blue mass of the pool bottom, which is emphasized by the prints on the cushions.



The combination of pots on this shelf may seem arbitrary, but a close look shows that the balance of tones and sizes is broken only by the different textures.



Contemporary Bauhaus on the Carmel

Architect and design: **Pitsou Kedem Architect (Pitsou Kedem, Irene Goldberg, and Hagar Tzvi)**

Location: **Haifa, Israel**

Photography: **Amit Geron**

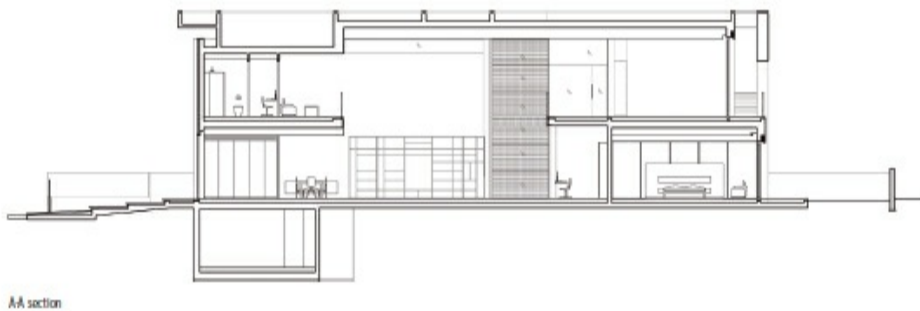
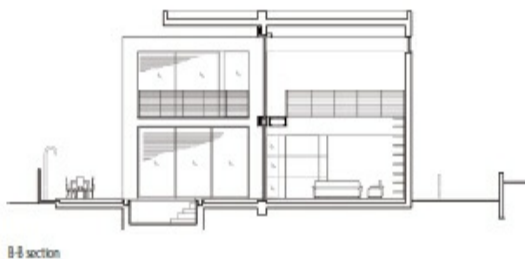
This house imitates the Bauhaus style, which had its heyday in Israel in the 1950s, twenty years after it began in Germany. The Bauhaus style is characterized by simplicity in its lines, uniformity in color, and spatial continuity, attaching importance to light and ventilation. The roof hovers over the building, consolidating the various parts of the structure.





020

The bonsai's curves give the space an Oriental air and contrast with the pool, the glass walls, and the house's structure of simple, geometric lines.







Eos

Architect: **Victor Cañas**

Location: **Faro Escondido, Costa Rica**

Photography: **Sergio Pucci, Francesco Bracci and Víctor Cañas** Eos stands near the sea but behind other buildings, so a design was used to make the most of this situation. The main areas and a terrace with a pool were placed on the third floor so they were at the height of the sea. The result is an almost complete union between the two spaces where the horizon of the terrace meets the sea.





The terrace stretches across the entire floor, which means that all the rooms have access to the pool. This achieves a first-floor effect and affords immediate access to the outdoor spaces.





The glass balustrade performs its function without spoiling the views.



This corridor has aluminum latticework and is always open, which serves to connect the rooms and ventilate the entire house. The decor turns it into an indoor-outdoor space.





023

The terrace at the height of the sea gives a feeling of space and circumvents the other buildings surrounding the plot.



Wiston Gardens

Architect: **Luigi Rosselli**

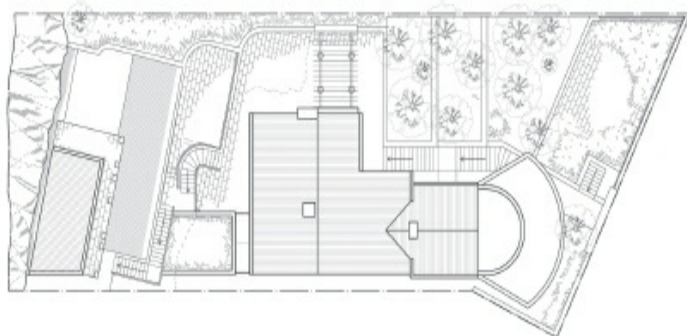
Location: **Sydney, Australia**

Photography: **Justin Alexander** This house has been refurbished and expanded to accommodate a large family. Changes included adding a new garage, a library, a pool, and a playroom, which was made by converting the old garage. Stairs were added to connect the old spaces with the new ones. Its stone exterior, columns, and the pool, which borders a steep rock face, give the ensemble the grandeur of a villa.

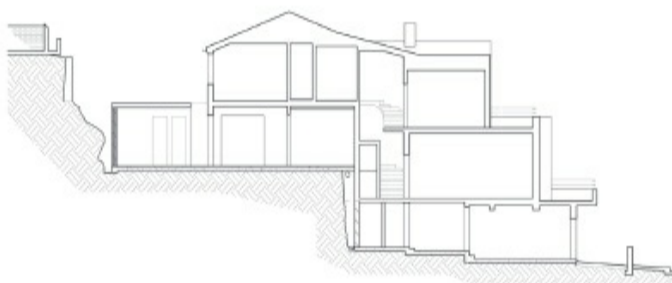




This inner courtyard links the two floors, and the plants turn it into a garden. Its light colors make it look bigger and help illuminate the interior of the house.



Alterations and additions site plan



Alterations and additions section









The porch next to the pool calls to mind ancient classical buildings, but its columns have a very contemporary shape. In contrast, the columns of the inner courtyard are rounded.



Santa Maria

Architect: **Hierve Diseñería**

Location: **Valle de Bravo, Mexico**

Photography: **Alejandro Villarreal**

This residential complex situated a hundred yards from the colonial church of Santa Maria Ahuacatlan has nine town houses and several shared amenities, including a pool and hot tub area that is the central core. The project was designed to adapt to the site and its surroundings, taking as inspiration the other buildings in the neighborhood and complying with the local authority's strict regulations. The houses are divided into volumes sited in an L shape.





The spaces are separated by great arches with thick columns that bring sobriety and simplicity to the complex. In the background, a row of sun loungers with red mattresses continues the geometry of space.





Stone is one of the key elements in this construction, and this space, decorated with stones piled in a corner, reminiscent of a dam, demonstrates this detail.







Maison Bioclimatique

Architect: **Patrice Bideau**

Location: **Brittany, France**

Photography: **Armel Istin**

This house was built using organic architectural principles and green energy components. The result was maximum efficiency using the minimum of technical elements. It is sited in an area with an oceanic climate, so a garden was designed protect the house from the westerly winds, and a separate vegetable garden was created on the east side. The roof is clad with 12 in. (300 mm) of Rockwool insulation.





An arbor connects the kitchen to the terrace and is a winter garden in cold weather. The roof is made of polycarbonate.



The wrought iron of the table and chairs takes second place to the beauty and originality of the colorful mosaics that cover them. These can be made by hand and at home.



030

The bottom of the natural pools is gravel or clay, and aquatic plants are used to clean the water instead of chemicals.



Casa 6

Architect: **studio mk27 / (Marcio Kogan and Diana Rodomysler)**

Location: **São Paulo, Brazil**

Photography: **Pedro Kok**

The design of this house is laid out around the veranda, which in the tropical climate of Brazil is a very commonly used space, where the interior and exterior come together. The veranda in this house is perpendicular to the lounge and covers a living room with a TV and part of the kitchen, which continues in the interior of the house. A studio was added in back. The doors separating the spaces on the first floor are sliding and can be recessed.





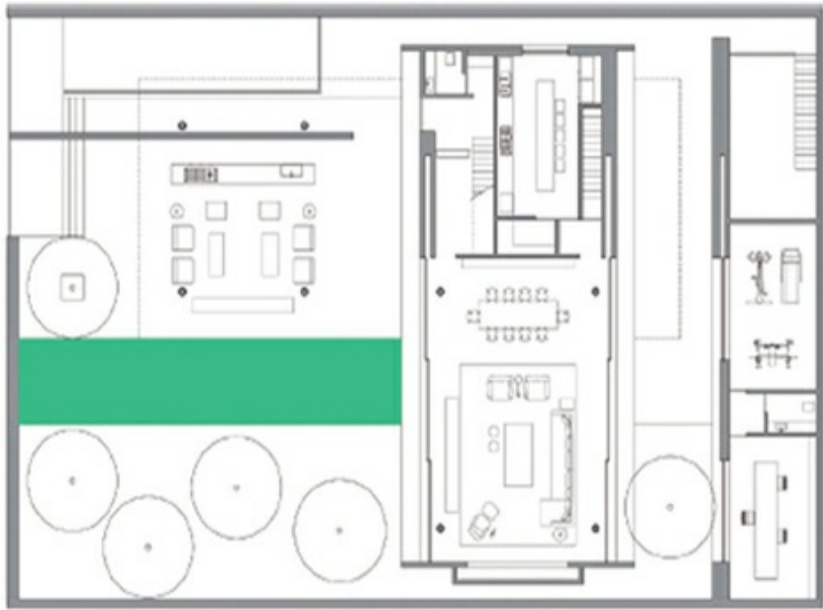
Swimming pools do not need to be square or have classical measurements. In this case, a long, narrow pool has been built in the space available along one side.





032

Wooden armchairs can be very uncomfortable. However, if they are wide and have armrests, soft cushions can be placed in them, which also gives you the option to modify the decor.



Floor plan





033

The rusticity of the stone wall stands out against the modernity of the rest of the house. Stone walls are solid and beautiful, and can provide a space with some coolness in the summer.



Elevation



This interior patio separates the main volume from the secondary one, which is a home office. A tree provides strength, volume, color, and presence without requiring great care.



Casa a Rayas

Architect: **Estudio Martín Gómez Arquitectos** Location: **Arenas de José Ignacio, Punta del Este, Uruguay** Photography: **Ezequiel Escalante**

A young couple looking for a simple, easy to maintain, and functional home with three bedrooms commissioned this house, which consists of two separate volumes. The first is for the bedrooms and the second for living areas. The terrace is divided into three spaces: a pool, an exterior dining room with a grill, and an outdoor living room.





035

This pool is stuccoed in gray cement. On one side, a stone wall features a great jet of water that is used to fill the pool.





The architects combined cedar wood with gray granite stone surfaces for the exterior of the house. They painted turquoise and white stripes on the wood in imitation of European beach awnings.





La Boyita

Architect: **Martín Gomez Arquitectos (Martín Gómez and Gonzalo Veloso)** Location: **La Boyita, Punta del Este, Uruguay** Photography: **Ezequiel Escalante**

This house consists of five separate volumes, one of which is used for the living areas and the rest for bedrooms. The pool is the center of the project, and the rest of the building revolves around it. The galleries between the blocks create an open living area and a fluid transition between the interior and the exterior.





037

A bed or couch with a canopy can be placed on a large terrace. It brings originality and grandeur to the space and is very flexible furniture for gatherings with family or friends.





In hot and rainy climates, it is a good idea to cover part of the terrace so that the outdoors and nature can be enjoyed even when the weather is poor.



Elwood House

Architecture: **NMBW**

Landscape design: **Michael Wright, Catherine Rush** Location: **Melbourne, Australia**

Photography: **Michael Wright and Peter Bennetts** The outdoor area of this house is a simple and practical yard where stone and wood take pride of place. In one corner is a small fireplace that calls to mind ones from years gone by. The space is austere, and there is little vegetation, which reduces care to a minimum. The fence is made of wood, just like the exterior walls of the house and the outside table.





039

You can buy structures for making fireplaces. This one is made of stone and has a storage space for combustible materials.





040

A stone floor is easy to clean and maintain in good condition. The sparse furniture is varnished to protect the wood from the weather.



Landscape plan



Summit Drive

Architect: **XTEN Architecture (Scott Utterstrom)** Location: **Beverly Hills, CA, USA**
Photography: **Art Gray**

This house is an extension to a steel and glass home built in the 1970s. The annex, which is a large terrace, was built with the intention of turning it into a relaxation and entertainment area. The terrace has simple geometric shapes and a low bare concrete wall that gives it a sense of austerity.





041

The arbor is set apart from the more conventional structures by its metal rods and the plates that cover it.





The couch's pure white lines contrast with the unpainted, unpolished, and unworked wall behind.

House in Estoril

Architect: **Frederico Valsassina, Rita Silva, and Joana Quintanilha** Location: **Estoril, Portugal**

Photography: **FG + SG Fotografia de Arquitectura**

The house was refurbished to achieve a more regular structure. The various volumes overlap and make up a monolithic construction enhanced by its materials. The house is divided into two clearly demarcated public and private spaces. The living area is dynamic, with entrances from the various gardens. Large windows in the relaxation area on the top floor make full use of the light.





From a distance, the residence looks like a glass house due to its large windows. An almost bare backyard helps set off the simplicity of the shapes.







043

A climbing plant requires little care and naturally beautifies a wall. In this case, the plant strip connects with the rest of the site—a very green living area.



Majadahonda

Landscape design: **Alba Garrido for Greendesign** Location: **Madrid, Spain**

Photography: **Nacho Uribesalazar** This terrace consists of a set of two couches and a center table beneath a wooden arbor, the roof of which can be expanded or retracted because it is a white canopy that operates in the same way as a blind, only horizontally. The cushions and small decorative details bring a touch of color to the somewhat neutral set.





Playing with colors when decorating any space is simple and works well. Choosing one or two complementary shades and ensuring that small objects coordinate is a good option.



Mhouse

Architect: **XTEN Architecture (Monika Häfelfinger, SIA; and Austin Kelly, AIA)** Location: **Venice Beach, CA, USA** Photography: **Art Gray**

This dwelling was designed as a residence for an artist so he could work at home. The house consists of two L-shaped blocks that intersect, one set aside for work and one for home use. The painter's studio required a high ceiling, plentiful natural light, and excellent ventilation. The corridors link the studio and the living area while surrounding the patio.





The decoration of this space is minimalist and focuses on color. The doorframes, the table, stairs, and shelving are orange, and together provide a feeling of harmony.



Leaving a large wall in the garden or terrace and painting it white is the perfect excuse to install an “outdoor cinema.”







Axial Symphony

Landscape design: **Design Systems Ltd (Lam Wai Ming, Fanny Leung, Fang Huan Huan, Zhang Xing, and Lansy Dai)** Location: **Shenzhen, China**

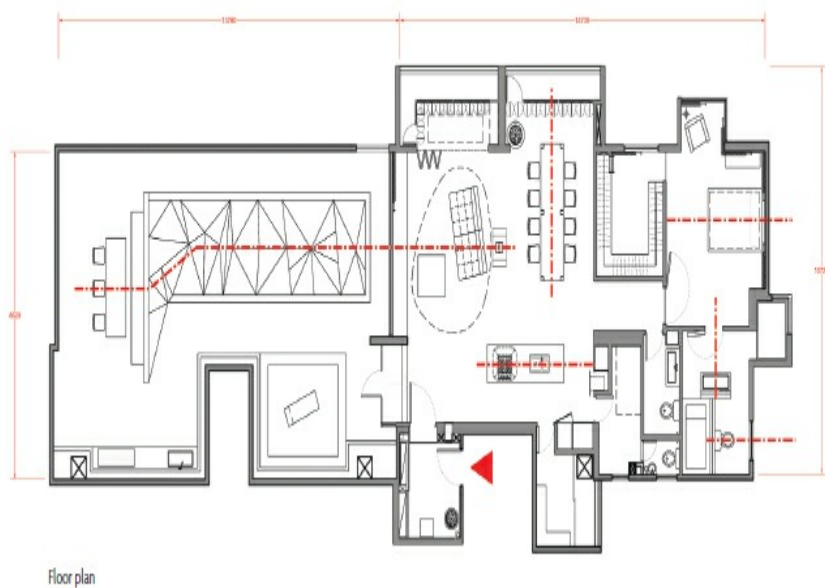
Photography: **Design Systems Ltd** The designers of this house sought to create a symmetrical space in which the inhabitants could achieve a state of experiential and spiritual balance. The starting point for this project is the manipulation of the central axis. The furniture in each room is laid out in the space in relation to the same axis so that the individual is always at the epicenter of the space.





047

The original terrain in this terrace with volume was altered to create the green hills that coincide with the axis of the window and the living room couch. The effect is innovative and relaxes the eyes.







Prototype

Landscape design: **Nicole Helene Designs** Architect: **Works Partnership Architecture** Location: **Portland, OR, USA**

Photography: **Shawn St. Peter**

This small house has been remodeled in order to accommodate a young family with two children. Given the small size of the apartment, specific furniture was designed to fit in the various spaces and meet the needs of the inhabitants. The terrace is simple and practical but preserves a design that is in keeping with the rest of the house.





The sturdy wooden table will remain in good condition for quite a long while. The lamppost, in imitation of an old oil lamp, is a special detail.







049

The orange lights draw new shapes and, together with the dark wood, add warmth.



Soto Moraleja

Landscape design: **Tania Stefanova for Greendesign** Location: **Madrid, Spain**

Photography: **Nacho Uribesalazar** The color range of this outdoor space is controlled down to the smallest detail. The white of the two center tables contrasts with the dark grey of the couches. The touch of color is provided by the cushions in two contrasting colors: green and beige. Green coordinates with the terrace's plants, while the beige is repeated in the flower of the center plant.









Villanueva

Landscape design: **Alba Garrido for Greendesign** Location: **Madrid, Spain**

Photography: **Nacho Uribesalazar** This terrace is dominated by neutral tones in the relaxation area, with white furniture and the structure of a very dark aluminium arbor, which is coordinated with the ceramic tile flooring. The pool area, however, is full of contrasts. The green lawn is enhanced by the turquoise of the pool. As a whole, the space is practical, simple, and versatile.





050

The white awning does not create marked shadows, and it reduces the entry of direct light without forgoing brightness.





Casa C-24

Architect: **Ábaton Arquitectura** Landscape design: **Batavia**

Location: **Madrid, Spain**

Photography: **Belén Imaz**

This house is notable for the simplicity of its shape and structure. With geometric lines, Casa C-24 is divided into three volumes interconnected with the outside through large windows that open onto the first-floor garden. The kitchen and living room are separated by a 13 ft. (4 m) high sliding door, which creates a larger and brighter space.





A large window will always give the feeling of more freedom, light, and space. Choose thick, good-quality glass to retain the room's heat and muffle street noise.



Second floor plan



Ground floor plan







Guijo

Architect: **Ábaton Arquitectura, in partnership with Batavia** Location: **Cáceres, Spain**

Photography: **Belén Imaz**

This family home is the result of the comprehensive remodeling of an old barn. The rooms are sited around the two large central areas: the living room and kitchen. Basic materials—water, iron, and cement—have been used along with the existing stone. The house has solar panels that provide energy in summer and two turbines that use the beds of two streams to supply electric power to the storage heaters in winter.





052

This patio has a natural spring of water gushing from a rock, which cools the house in the hottest months.

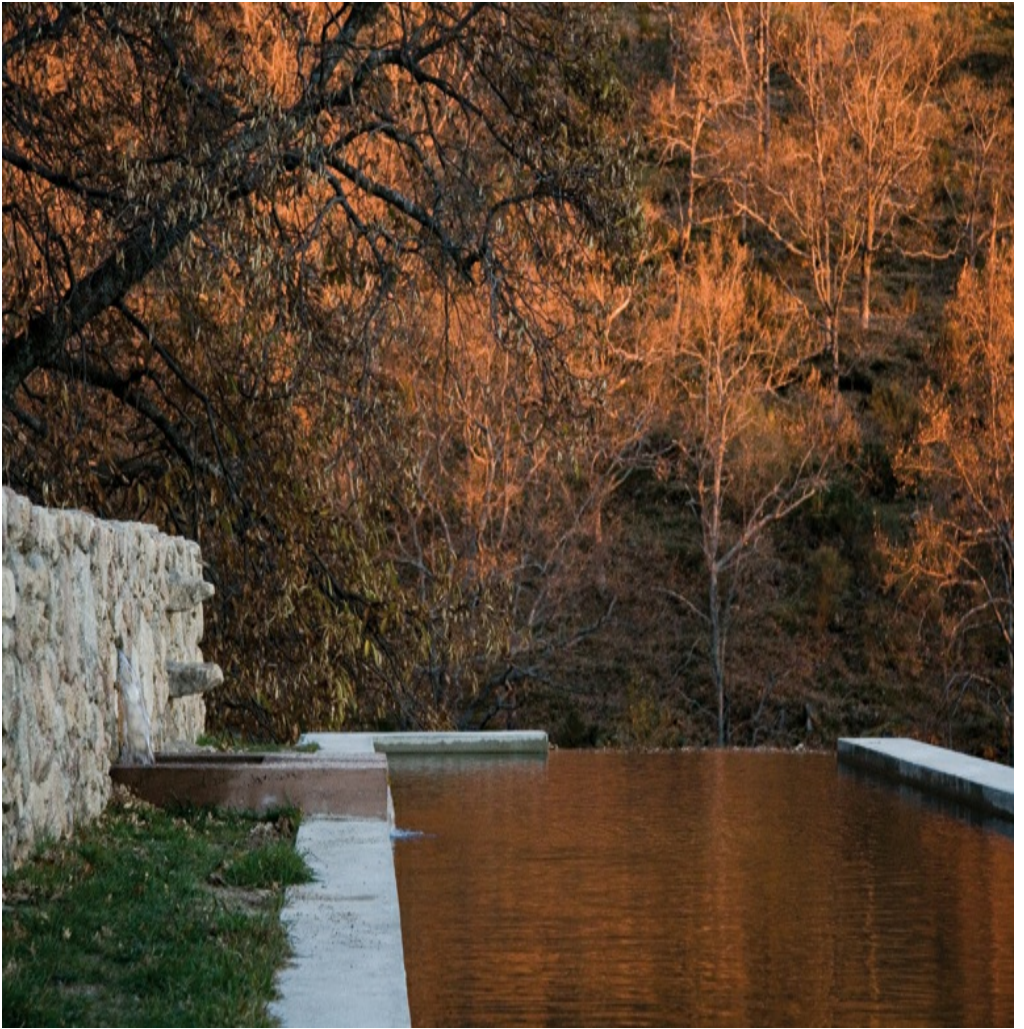


Section one



Section two



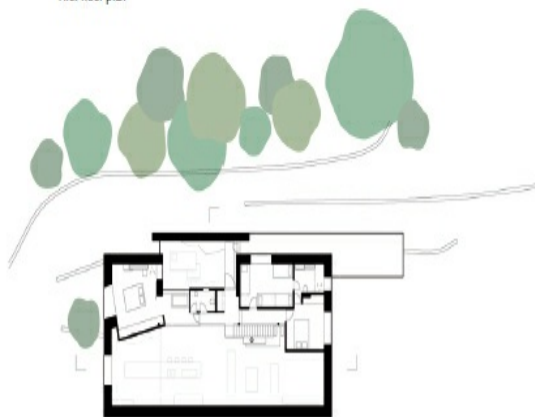


The natural pool is actually a reservoir through which water continuously flows and irrigates the pastures.

The refurbishment plan respected the original appearance of the barn and its surroundings, so the house blends into the natural landscape and does not stand out above the vegetation.



First floor plan



Second floor plan



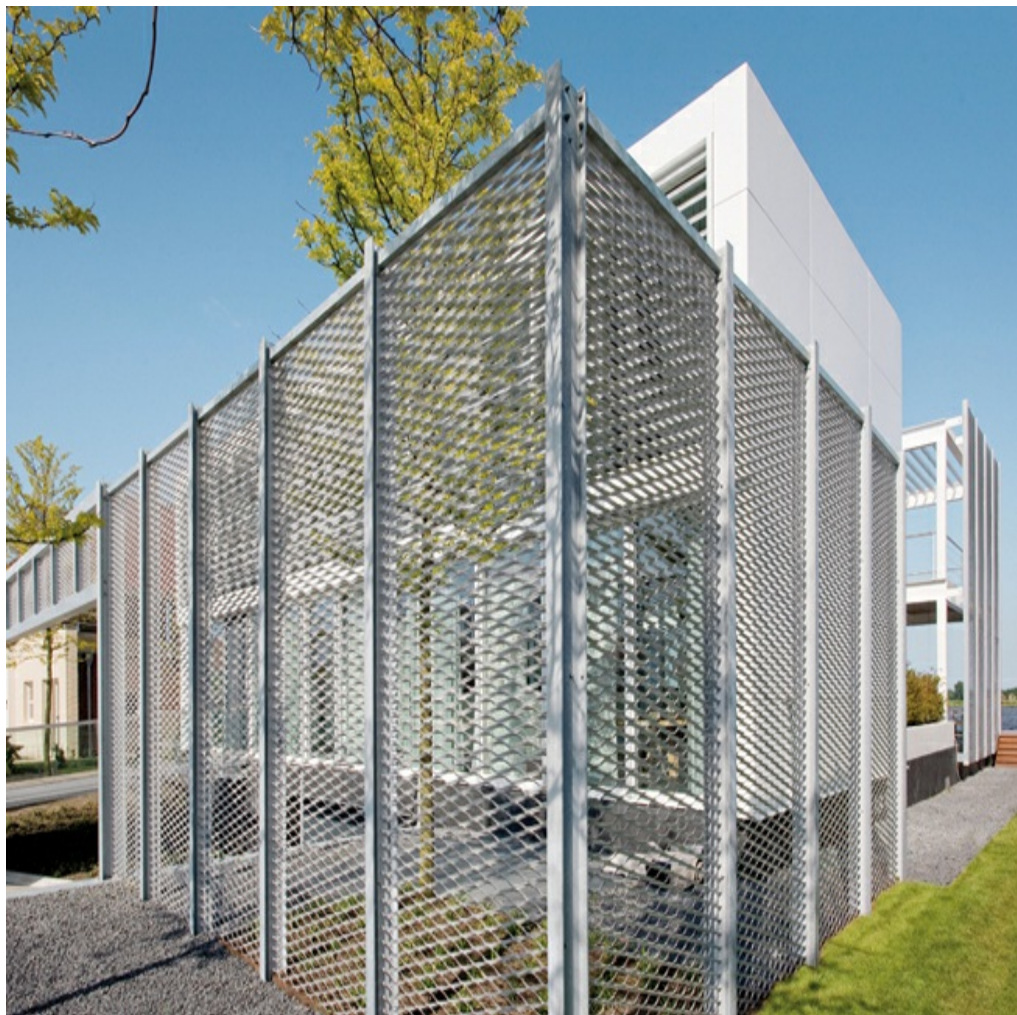
Steel Study

Architect: **Eric Vreedenburgh (Archipelontwerpers)** Location: **Leeuwarden, The Netherlands**

Photography: **Marcel van der Burg**

The majority of freestanding houses in Holland are situated in the middle of a plot, leaving the sides empty. By contrast, this house uses the complete building plot, and its patio is on the inside. The entire house is arranged around this patio. The outdoor and indoor spaces alternate rhythmically. All the rooms have access to the patio, which functions like an ancient Roman cloister. The part that faces the street can be closed off using reinforced blinds.





054

A gray grille surrounds and provides privacy to the house, while the holes in the grille lessen the feeling that it is a rigid and impassable barrier.





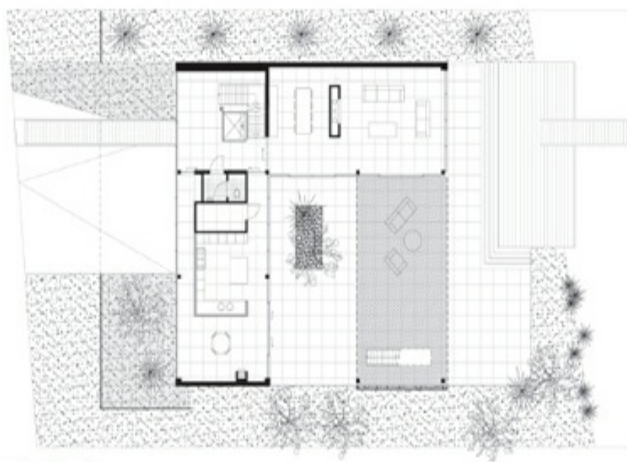


The slope leads down to the garage entrance, which is in the basement underneath the house.

An upper terrace has been built in the inner patio to provide the upstairs bedrooms with outdoor space. Furthermore, the U-shaped structure affords marvelous views.



Second floor plan



Ground floor plan





São Bento Residence

Architect: **Anastasia Arqitetos**

Location: **Belo Horizonte, Brazil**

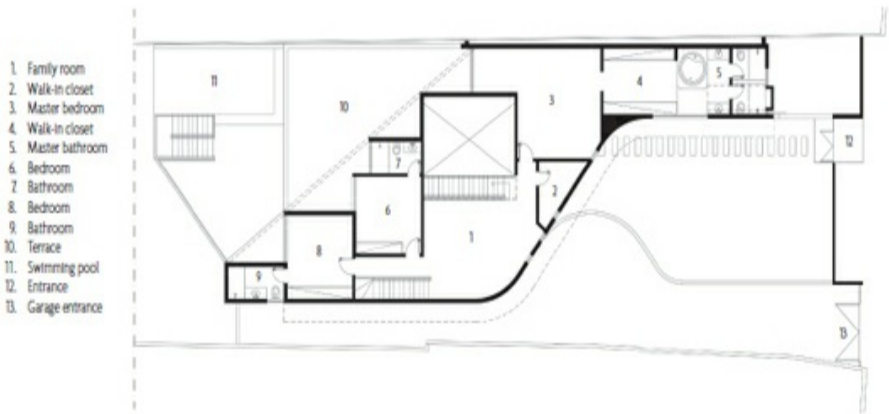
Photography: **Jomar Bragança**

This residence is situated on a 49 ft. x 148 ft. (15 m x 56 m) lot. It was designed to provide maximum sunlight in the upper bedrooms by extending the lower floor and providing a terrace. The curve on the top floor is one of the most striking architectural features of this construction. Overhead lighting provides soft illumination, which makes it possible to close the house on its sides, thus providing more privacy.

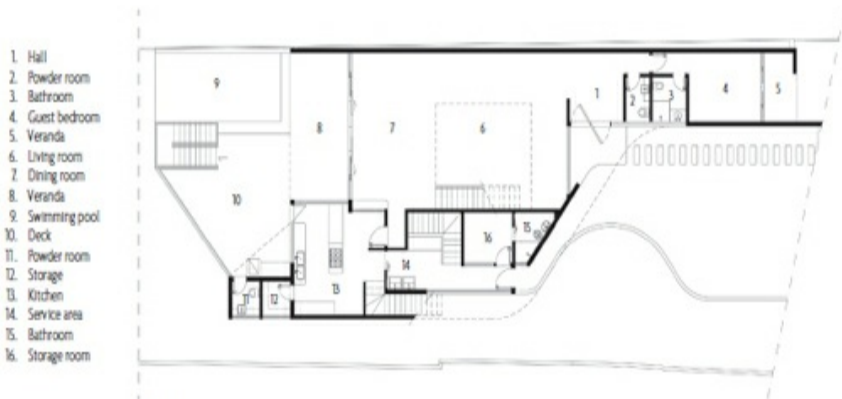




A touch of green can bring life to any nook. Plants that do not require much care, such as cacti, are ideal for this type of space.



Second floor plan



First floor plan



057

Stone floors are very hard, tough, and easy to clean. They take away warmth from a space but do provide a rustic look, which can be very attractive, depending on the ambience.





058

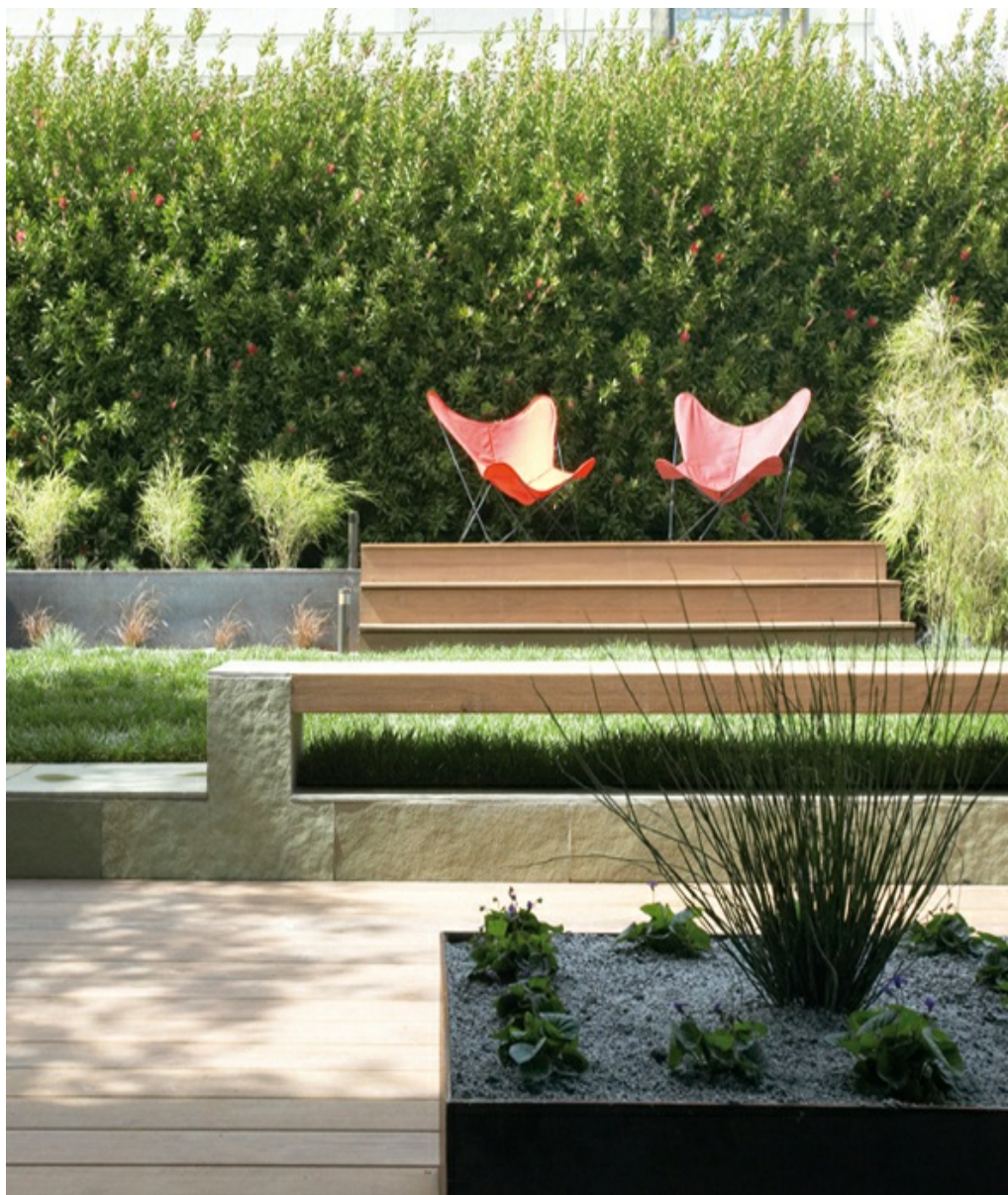
The terrace provides an outdoor space on the top floor, and also serves to shield a relaxation area near the pool.



Open Box House

Architect: **Feldman Architecture** Location: **San Francisco, CA,USA** Photography: **Paul Dyer**

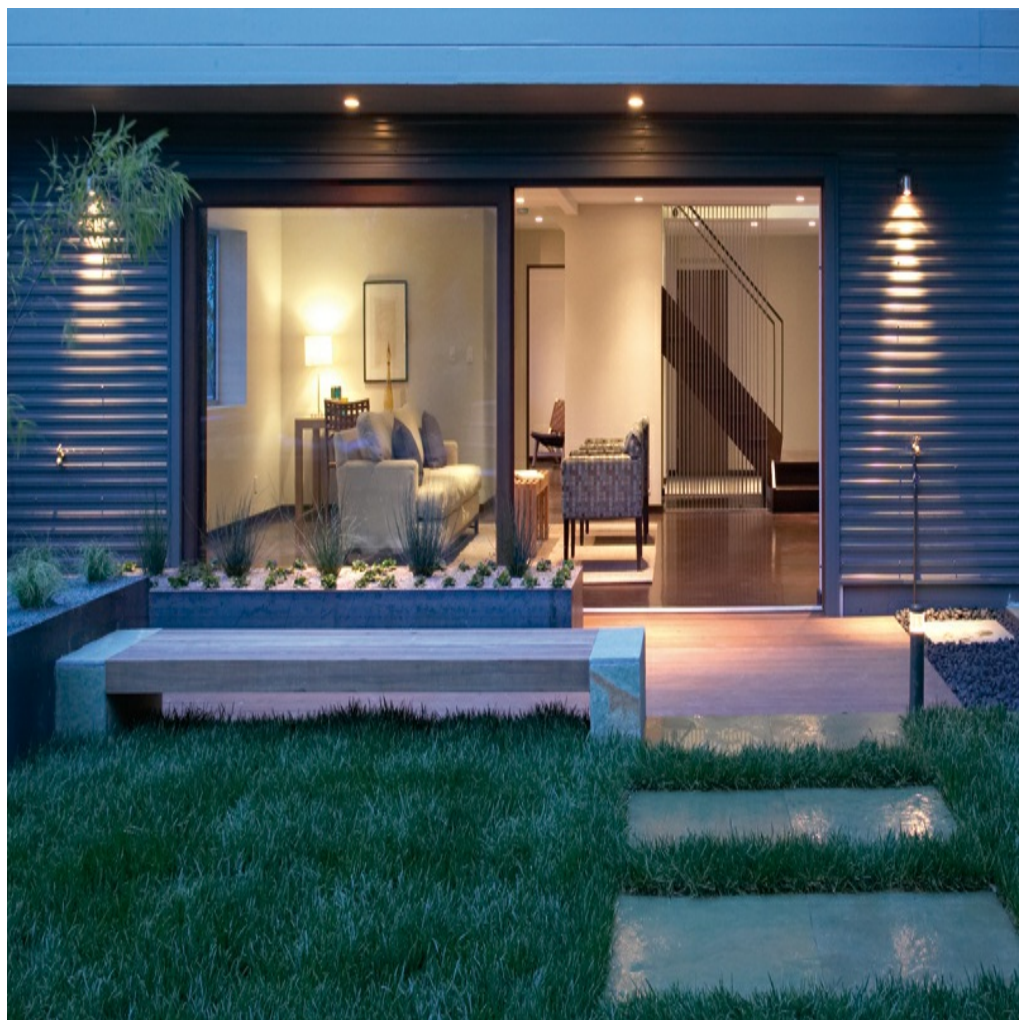
This house results from the refurbishment of a run-of-the-mill box home. Interior walls were removed to create a large, open plan that centers the house on a new kitchen. Floor-to-ceiling windows were added to offer stunning views. Steel and aluminum finishes contribute to its clear and clean design.





The design and materials of the stone and wood bench match the house, and the red chairs lend a touch of color. At the end of the yard, the tall bushes beautify the space and provide privacy.





House in Campos

Architect: **Luiz Eduardo Indio da Costa**

Location: **Pedro do Rio, Petrópolis, Brazil** Photography: **Mario Grisolli**

This Brazilian house stands on a mountainside and has just one large floor, which covers 4,305 sq. ft. (400 m²). It is a second home and was designed from an existing steel frame at the meeting point of indoor and outdoor spaces, evoking lightness, openness, and warmth. The house is L-shaped and goes around part of the garden and pool. The architectural structure mixes strong and hard-wearing materials with the ethereal consistency of the glass.





An arbor that changes the extension of the roof is ideal for creating indoor-outdoor spaces. In this case, it is a mobile platform.



It can be a good idea to lay wooden decking on terraces to prevent reflected sunlight bouncing up and bothering your eyes, especially when it is at its brightest.



If you live in an area without too much pollution, you can put a telescope on the terrace and enjoy a starry sky.





Casa Palillos E-3

Architect: **Vértice Arquitectos** Location: **Peru**

Photography: **Vértice Arquitectos** This house stands on a sloping lot, which allows for three levels built with a variety of materials and textures that create intertwined outdoor and indoor spaces. The client wanted to have ocean views from common areas—which should always be considered the most important areas in the house. The social area is located on the second level and has access to an infinity pool that visually adjoins the sea.





Tables with glass tops, which expose the structure of the furniture, are an unexpected element in an exterior space. They are ideal in hot climates where there is never any snow or hail.







Pacific Heights Town House

Architect: **Feldman Architecture**

Location: **San Francisco, CA, USA**

Photography: **Paul Dyer, Roland Bishop** A plan for remodeling a Victorian house from the early twentieth century was devised for this residence. The clients wanted to maintain the building's traditional feel, but also to infuse some modern elements and make the house as green as possible. The backyard had to be accessible from a number of spaces, and living areas were placed on the top floor, where the light was best and where a roof garden was added.





Tiered flooring can be used to store garden tools, cleaning equipment, and toys underneath the stairs.





Bahia House

Architect: **Studio mk27 / (Mario Kogan and Suzana Glogowski)** Location: **Salvador, Brazil**

Photography: **Nelson Kon**

The building is laid out around a central patio to maximize natural ventilation and keep the interior cool in hot weather. The whole house is designed to ward off high temperatures and excessive sunlight, and to that end, the architects used traditional Brazilian techniques involving clay roofs and wooden ceilings. Bahian houses use the northeast wind blowing in from the sea to cool the entire house.





065

The small holes of the latticed wooden panels separate the spaces to let air but not light through and lessen the strength of the wind. They also provide privacy.





A rug is a good addition to any space because it adds a risk-free splash of color. These are indoor rugs, but there are others specially designed for terraces.







Dovecote Barn

Architect: **Nicolas Tye Architects** Location: **Great Amwell, Hertfordshire, United Kingdom**
Photography: **Nerida Howard**

This project is an extension to a barn that was converted into a house. The clients wanted to extend the rear of the house to create more space and add depth to the building. The extension becomes the new dining and informal social area, with direct access to the children's play area and to the garden. The architects retained the character of the original barn despite using innovative and high-quality materials.





Lavender is a plant that is easy to care for and grows best on dry and sunny land. It is attractive, easily recognizable by its color, and famous for its medicinal properties.







The water features along the boundary that separates the patio from the garden are a modern and practical decorative item. The sound of water is relaxing.





House Lam

Architect: **Nico van der Meulen**

Location: **Bedfordview, South Africa**

Photography: **David Ross, Barry Goldman, and Nico van der Meulen** The clients asked for a refurbishment and extension of an old house built in the 1950s on steep terrain with views of 270°. An infinity pool was placed near the bluff to offset the height difference. The pool starts very close to the living room, so when the sliding doors giving onto the terrace are opened, there is the feeling that everything is in a single area. The house was expanded to accommodate two garages and three bedrooms.





This terrace provides plenty of ideas about how to illuminate an outdoor space. The ball-shaped lamps are minimalist and elegant, and the torches in the background are in an ethnic style.



070

The pool is so close to the living room that when you open the doors, you seem to be in it. This creates a sense of a unique, shared, and large space that is free of architectural barriers.







A natural stone staircase is always a fine addition to the exterior of a house, especially if the house is located in a wilderness-type environment.





Pretty Beach House

Architect: **Bells at Killcare**

Location: **Pretty Beach, NSW Bouddi Peninsula, Australia** Photography: **Bells at Killcare**

Pretty Beach House is an Australian guesthouse situated within a ninety-minute drive from Sydney. This sophisticated house is surrounded by angophoras and has views looking down to beautiful sparkling Brisbane Water. Located in such a magical setting, the place has a fantastic pool and comfortable facilities decorated with rustic furniture that gives the scenery a timeless character.











If you have an exterior table and want to add a tablecloth, choose the fabric wisely. Opt for waterproof materials that can withstand the rain. Plastic tablecloths in beautiful patterns or textures are a good choice.



Roof Gardens



City Rooftop

Landscape design: **Secret Gardens of Sydney** Location: **Sydney, Australia**

Photography: **Jason Busch**

This rooftop garden is on the top of a twenty-five-story building surrounded by other skyscrapers. Geometric shapes are essential to the design of this space, in which a circular area with grass dominates the scene. A table, chairs, and two benches, visually separated by wood, turn the front area into an eating or resting nook.





073

The wooden seats frame the roof and provide a seating area where the space and the views can be enjoyed.



The geometrically shaped bushes are a formal element, while the lavender and iris plants add a free and easy air.





City Penthouse

Landscape design: **Secret Gardens of Sydney**

Location: **Sydney, Australia**

Photography: **Peter Brennan**

Spanning three levels, this city penthouse was in need of a makeover. The client wanted a low-maintenance rooftop garden to enjoy personally while also creating expansive entertaining spaces. Set against views of the harbor and city, the garden has ponds, walkways, an entire entertaining level, and a hot tub.







Some items, such as the water feature, stairs, and furniture, are made of wrought iron and painted black. They can be cleaned by simply rubbing gently with a damp cloth.



Above, a small metal water feature decorates the platform leading to the next level. On the left, the hot tub overlooking the harbor is spectacular.





In this area, an artificial pond with plants was installed, which is vaguely reminiscent of a wetland and quite a surprise among so many urban features.



The marsh plants, such as *Acmella decumbens*, are ideal for beautifying the edges of the pond, concealing canvases or other artificial materials, and cleaning the water.



Marinka

Architect: **2B GROUP (Vyacheslav Balbek, Olga Bogdanova, Alena Makagon)** Location: **Kiev, Ukraine**

Photography: **Vyacheslav Balbek**

This is a three-story penthouse apartment near the Dnieper River. The upper floor consists of a landscaped terrace covering 2,690 sq. ft. (250 m²). The house is decorated with detail and originality. Features include a cement bottle decorated with Braille writing, a stone pouf, and a red Maersk shipping container. The main element is a vertical garden that presides over and connects the various rooms.





The geometric illumination of this garden terrace brings a creative touch, and sun loungers on the wooden decking lend an air of relaxation. In winter, the glass pavilion is used.





This small shrub is anchored in a cement-covered pot and serves as a railing in front of the shaft that looks onto the inner courtyard.



The vine on the wall creates an interior garden and gives a feeling of freshness.



Regent's Park

Architect: **Amir Schlezinger**

Location: **London, United Kingdom** Photography: **Jerry Harpur**

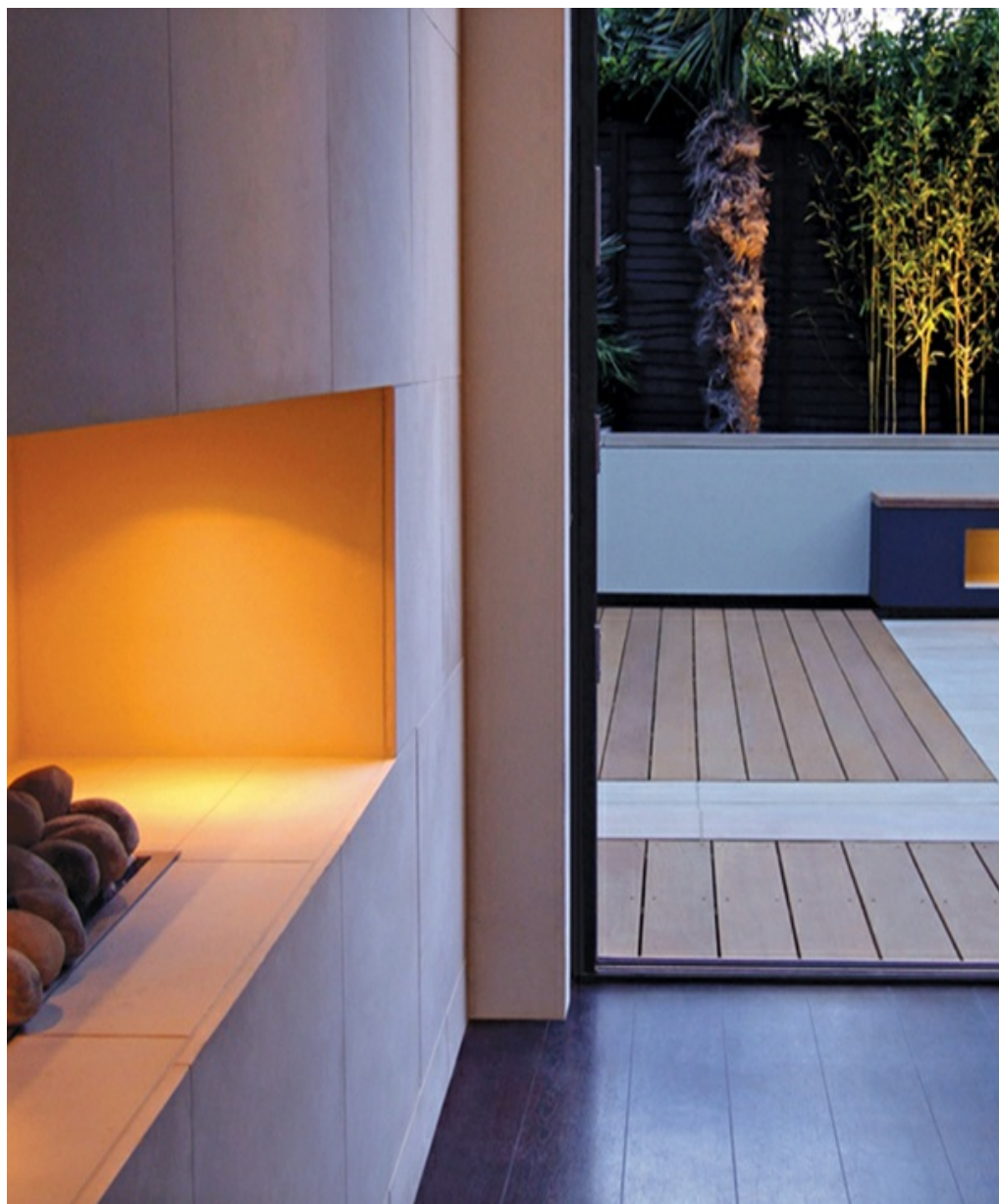
Regent's Park has a terrace and a garden, both connected with the inside of the house through the repetition of shapes and materials. The seats repeat the form of the internal inglenook, while the interior and exterior spaces share the same wooden flooring. The outdoor spaces are minimalist and very geometric in style, and the plants complement their structures.





The bench follows the outline of the wall and is illuminated on the inside, thus providing orange light, which coordinates with the rest of the space in both form and color.



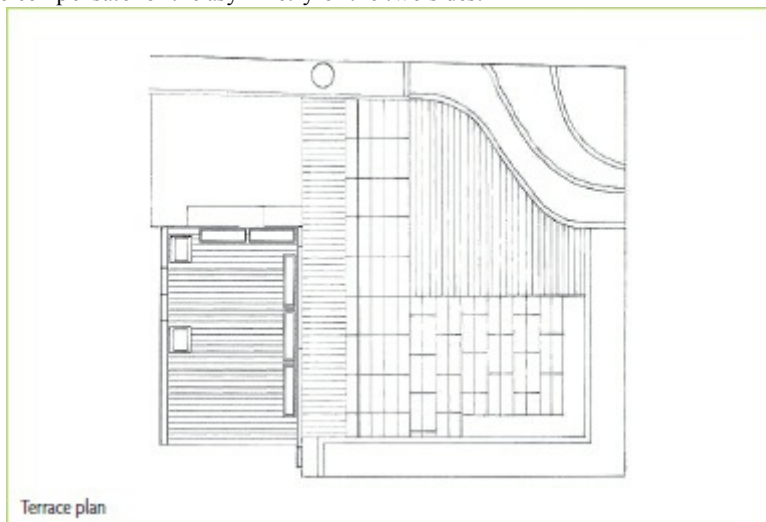




The terrace is divided into two areas by a row of sturdy cement pots containing plants.

081

The terrace is surrounded by plants and shrubs and is irregularly shaped. The sun lounger is positioned to compensate for the asymmetry of the two sides.





Barrio Salamanca

Landscape design: **Cristina Garagorri for Greendesign** Location: **Madrid, Spain**

Photography: **Nacho Urbesalazar** Contrasts and oppositions predominate on this terrace. Divided into several zones by decorative awnings and spacers, this space is as practical and functional as it is elegant and well designed. The terrace contains a seating area, an area for eating, and a place with two sun loungers and no awning, for sunbathing.





A good way to separate spaces is by using large pots or planters. The result is optimal if you also add a small flower bed to mark the boundary of the areas.





Water Street House

Architect: **Jason Fort**

Location: **St. Augustine, FL, USA** Photography: **Jason Fort**

This 2,370 sq. ft. (220 m²) house was built so as to become a historic piece in the future. Its 398 sq. ft. (37 m²) terrace provides fabulous views. The house fits in with the residential complex in terms of structure and appearance. The house has low-maintenance needs, and its materials are designed to age gracefully, adding interest to the construction.





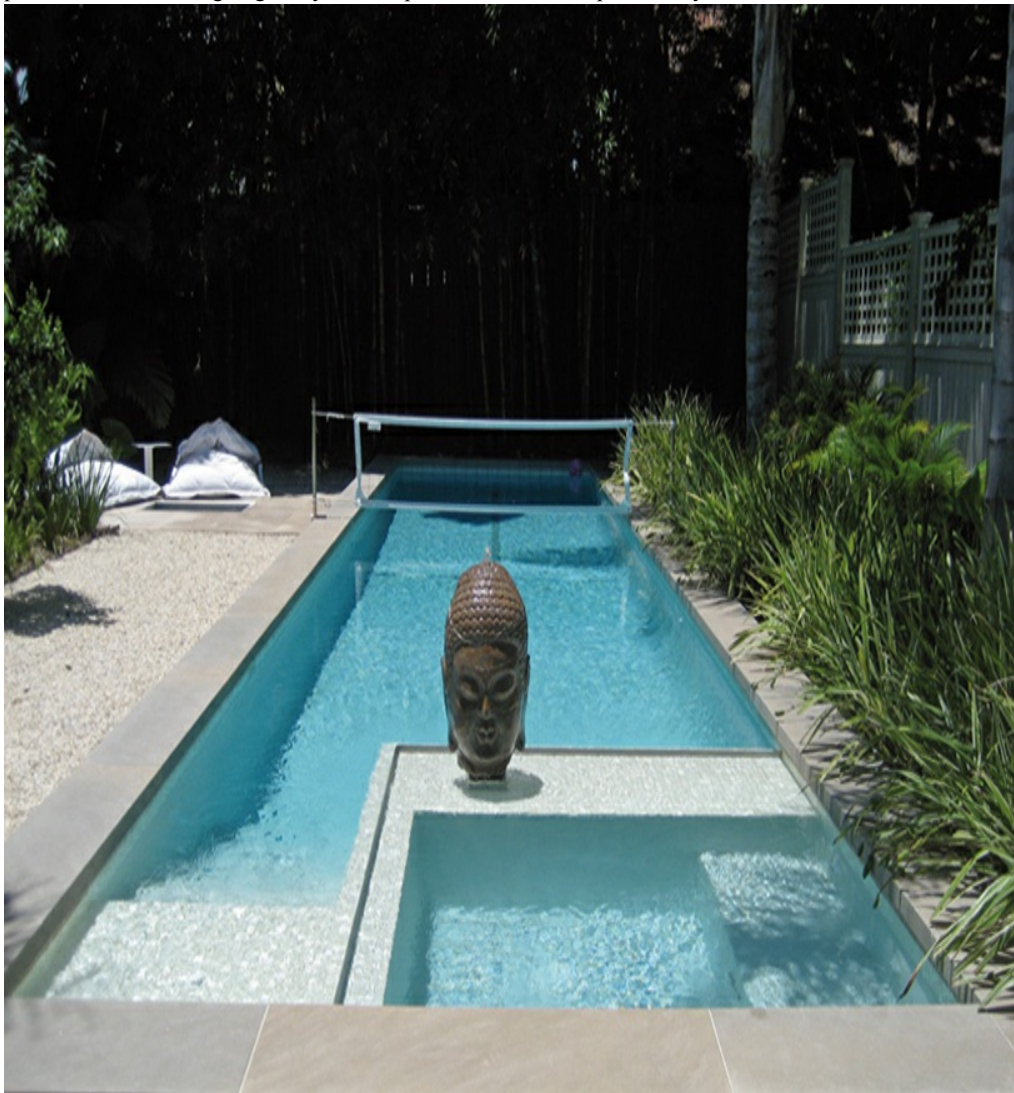
It is increasingly common to find outdoor spaces with running water systems such as faucets installed. They are especially indispensable in outdoor kitchens.



The stools add a minimalist touch to the whole and are aligned with the wooden planks. The arbor frame is attached to the shed wall, and all elements are unified.



The pool was decorated with Zen motifs to reflect the proprietor's philosophy. These highly personal features bring originality to the space and reflect the personality of its owners.



SoHo Terrace

Architect: **Andrew Wilkinson; Robert Glass** Location: **New York, NY, USA**

Photography: **Garrett Rowland** This roof garden is located atop a prewar apartment block in Manhattan, directly above a full-floor loft. The owners wanted a large terrace to accommodate several uses, including an area for children, another for dining and cooking, and a more private space adjacent to a home office and guest room.





A deck is the ideal space to install an outdoor sauna. The height of the terrace furnishes the space with privacy and quiet.





The kitchen, lounge, and dining space is best sited under an arbor to shelter it from rain or too much sun.



Almanzora

Architect: **Ábaton Arquitectura** Location: **Madrid, Spain**

Photography: **Belén Imaz**

Almanzora is a set of apartments in two blocks, which are completely different despite being connected. The building facing the street is much simpler in comparison to other buildings in the area. The interior building has a circular structure with an open concrete façade that emerges from the basement and is broken down as it ascends.





Placing artificial turf on the roof helps insulate and preserve the inside temperature throughout the year, which saves up to 26 percent in energy costs.



The circular building has a central courtyard providing access to each apartment through simply decorated and easy-to-maintain open spaces.



The circular building's roofs are all landscaped, which allows residents to enjoy silence and nature on top of an apartment block.







Filadelfia Corporate Suites

Architect: **BNKR Arquitectura**

Location: **Mexico City, Mexico**

Photography: **Hector Armando Herrera & Fabiola Menchelli** The terrace of this hotel is a community space for customers, usually business travelers. The roof garden has 360° views of the city. The area is on the tenth and last floor of the building, which is 108 ft. (33 m) tall. A rectangular prism emerging from the center of the building presides over the center of the terrace and provides access to it, and also houses elevators and restrooms.





The dark wood gives the space a contemporary and minimalist touch.



The rectangular prism ascends throughout the building and ends on the terrace.





091

Aluminum furniture is used to decorate minimalist spaces because it visually lightens the space. It is practical because it does not rust and requires no special maintenance.





Casa en Las Dolomitas

Architect: **JM Architecture**

Location: **Campo Tures, Bolzano, Italy** Photography: **Jacopo Mascheroni** This house is fenced by a 7 ft. 10 in. (2.4 m) tall wall made of horizontal wooden slats that bring out the perspective and cast shadows both from the sun and from the reflectors below. The house is surrounded by a deck made from 5½ in. (14 cm) wide ipê wood planks, which ends in a sunbathing platform fitted with a hot tub.





The wooden decking can be covered completely with a white canopy that slides along rails placed on steel beams and thus becomes a retractable roof.



093

So that the home receives as much light as possible, a custom silicone structural enclosure wall and huge sliding glass doors have replaced the walls.









2 Bar House

Architect: **Feldman Architecture**

Location: **Menlo Park, CA, USA**

Photography: **Joe Fletcher**

The main goal in designing this home, in addition to convenience, beauty, and originality, was to keep construction costs to a minimum. Sliding doors on the first floor provide easy access to the patio. The roof garden allows the upper rooms to also have access to an outdoor space. Construction materials are low cost and ecological, in line with the clients' requirements.





Installing an electric fireplace in an outdoor space is a good way to have an exterior cooker in summer and a heat source in winter.



First floor plan



Second floor plan

1. Garage
2. Kitchen
3. Living room
4. Sitting room
5. Master bathroom
6. Bedroom
7. Master bedroom
8. Bedroom





095

The roof garden in the picture is not intended for use as a relaxation area but rather is intended solely to beautify the house. Furniture could be added to turn it into a recreational space.







Ivy Street Roof Garden

Landscape design: **Andrea Cochran** Location: **San Francisco, CA, USA** Photography: **Andrea Cochran**

This roof garden was designed during the renovation of an old warehouse into residential lofts. The terrace was planned off the penthouse space and built over an addition to the older building. To accommodate the weight and plants at the same time, three paving materials were combined: checker plate aluminum, plaster and concrete, and recycled lumber.





The various volumes and shapes of the planters give the terrace a modern and original look. The plants are easy to maintain, which makes the terrace a practical space.



097

The fence provides privacy and is made of Plexiglas, which allows the light to pass through and changes the illumination of the room throughout the day.









Greenwich Roof Garden

Architect: **Graftworks Architecture + Design** Location: **New York, NY, USA**

Photography: **David Joseph**

This private roof garden in Manhattan was built with lumber recycled from the water tank that had been on the roof. The wooden slats provide almost complete control of shapes and volumes, and this creates the illusion of waves or curves of the sun loungers. The edge of the roof is decorated with plants and is also a protective barrier.





098

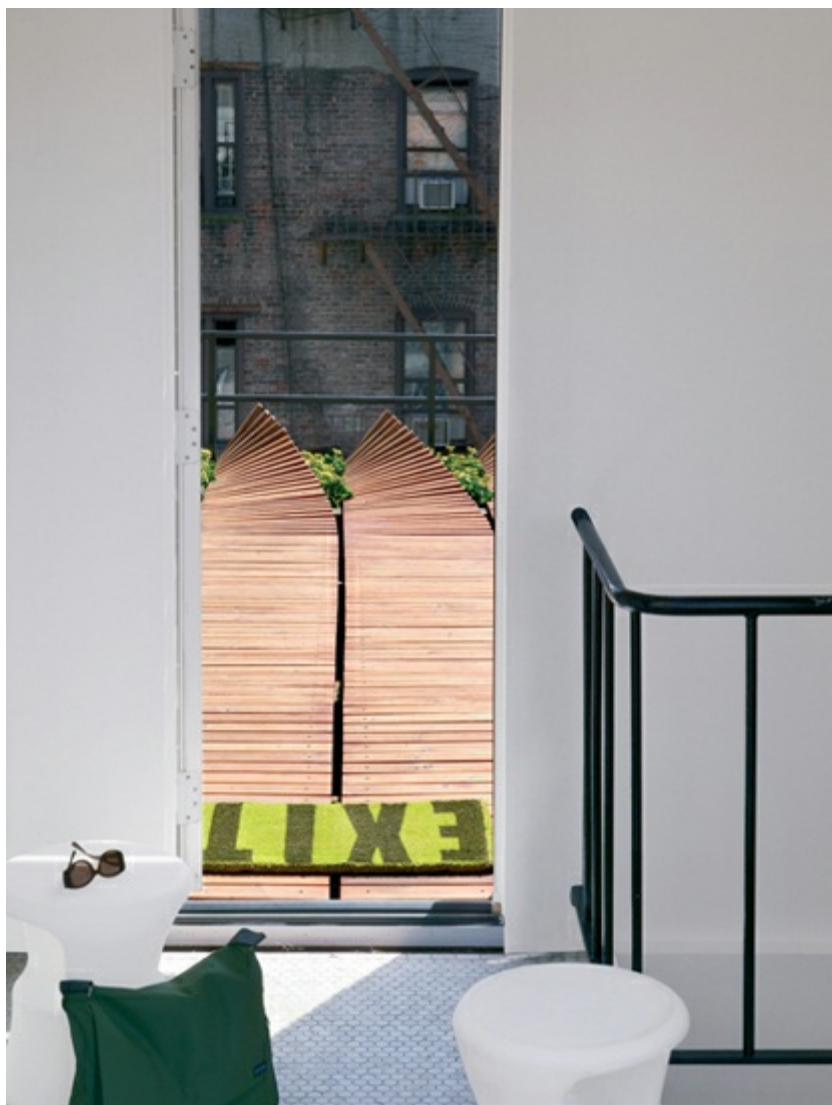
The sun loungers were built on concrete and plaster platforms. Small storage areas were also built with wooden slats.



The wooden slats are raised at the edges of the roof in a curve to form waves that are reminiscent of the sea. The greenery emerges between the waves to add a touch of color.







Patios



House Like a Museum

Architect: **Edward Suzuki and Toshiharu Nanba (Edward Suzuki Associates)** Location: **Kamakura City, Kanagawa Prefecture, Japan**

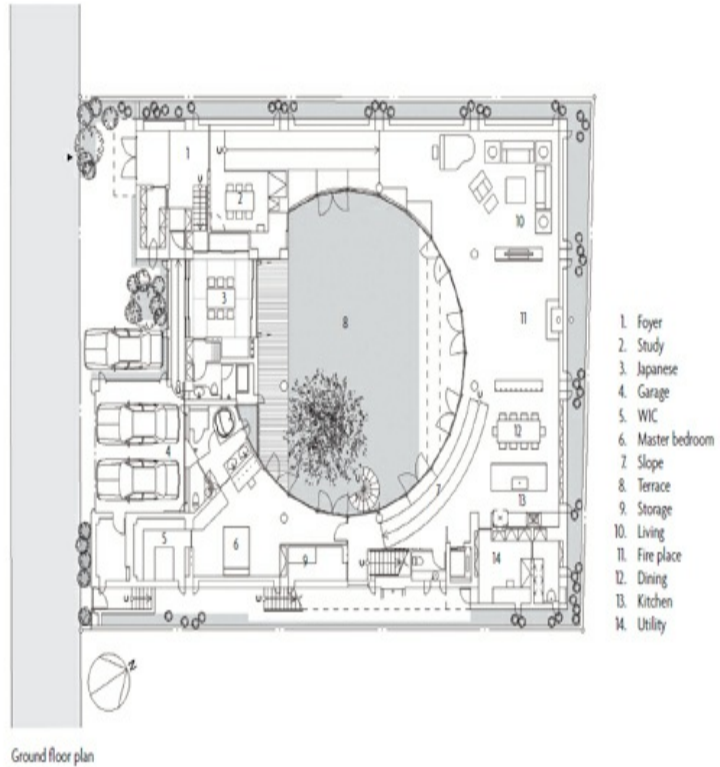
Photography: **Edward Suzuki**

This house is located in a residential and commercial zone five minutes from the train tracks. Since the surroundings were not aesthetically pleasing, it was decided to design the house so that it would look inward, reminiscent of ancient Roman houses. A large circular patio 49 ft. (15 m) in diameter arranges the structure of the house, and almost all the rooms face this atrium-like space. A terrace overlooking the patio crowns the building.





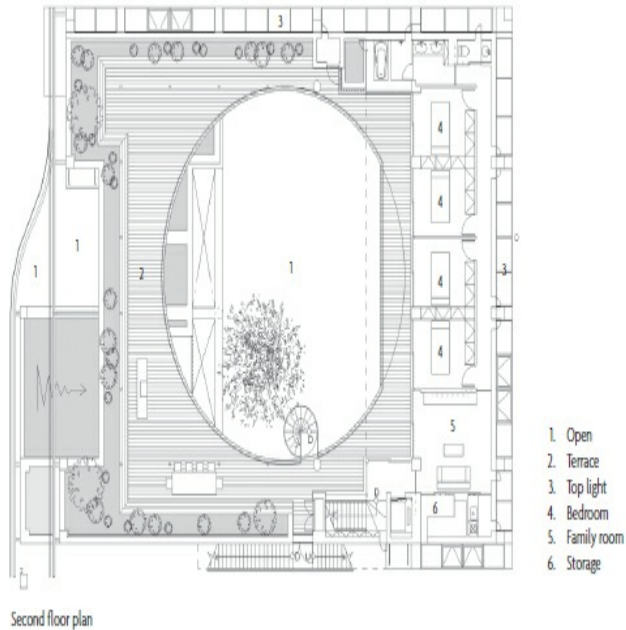
The impressive circular patio presides over the house. The flower beds cover the roof of the rooms on the floor below.







The flooring and part of the furniture is made of bamboo. Bamboo wood is more environmentally friendly because the plant regenerates quickly.

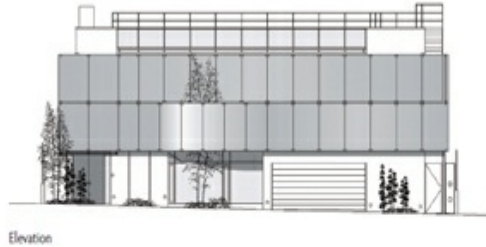


The terrace is an outside space, but because it is interior, it is protected from street noise. The central tree, which rises to the top of the building, decorates the property, along with the plants in the flower beds.





The glass of this terrace has moving parts for opening and closing to create breezes and ventilate the space, especially when the sun overly heats the room.





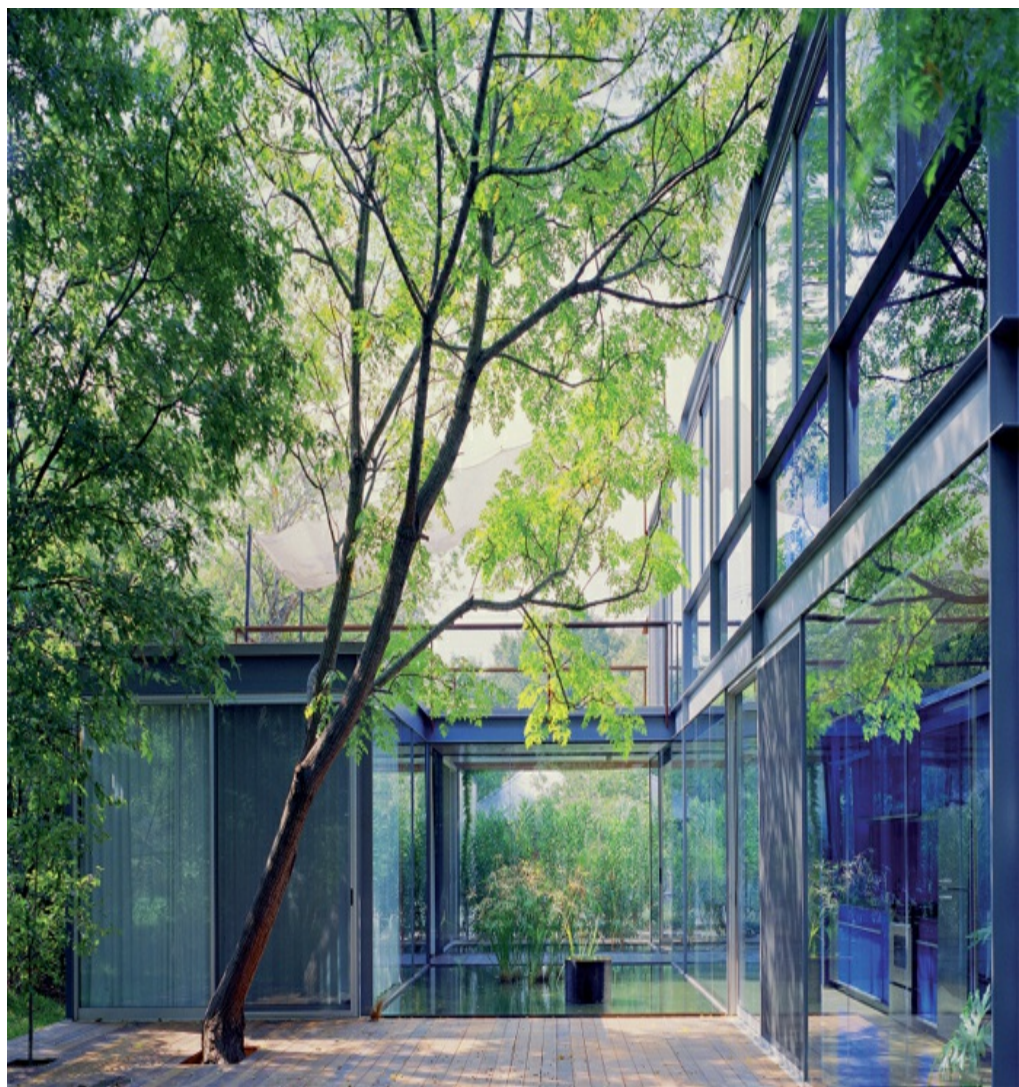
Annie Residence

Architect: **Bercy Chen Studio** Location: **Austin, TX, USA**

Photography: **Mike Osborne**

The house was built for two families and is therefore split into two living areas: two pavilions connected by a glass hallway. The pool is the focal point of the project, and all the rooms in the house are laid out around it. Both pavilions have different levels, which creates pleasant spaces for enjoying the outdoors.





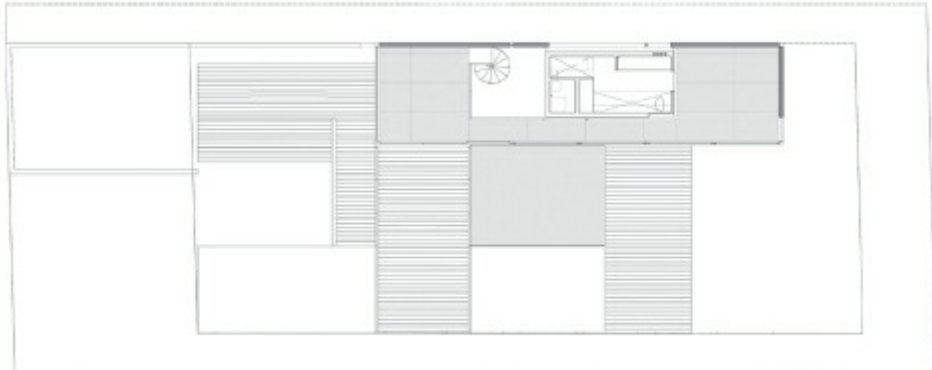
One way to create the effect of an interior patio without actually having one is for the building to go around part of the garden on three sides. If the walls are glass or have windows, the effect is enhanced.



Floor plan



Ponds with plants should receive sunlight even if they are located in an interior patio. Plants require four to six hours of sun a day and must be protected against possible frost in cold areas.



Floor plan



Cascading Creek House

Architect: **Bercy Chen Studio** Location: **Austin, TX, USA**

Photography: **Dan Bernstein, Ryan Michael** This house was conceived as an outgrowth of the aquifers in the area. The house has two wings, one private and one public, and its roof is designed to collect rainwater for subsequent use. It is a smart house, controlled by an iPad, and it is self-sufficient for most of the year, thanks to its ecological heating system and solar panels.









An inner courtyard with natural light is a perfect place for introducing natural exterior items into an interior. The gravel floor replaces a lawn and is easy to maintain.



Floor plan





The basin collects rainwater, which is then used to heat or cool the house via geothermal energy .



House with Three Gardens

Architect: **Satoru Hirota Architects (Satoru Hirota and Yoshimi Kondo)** Location: **Tokyo, Japan**

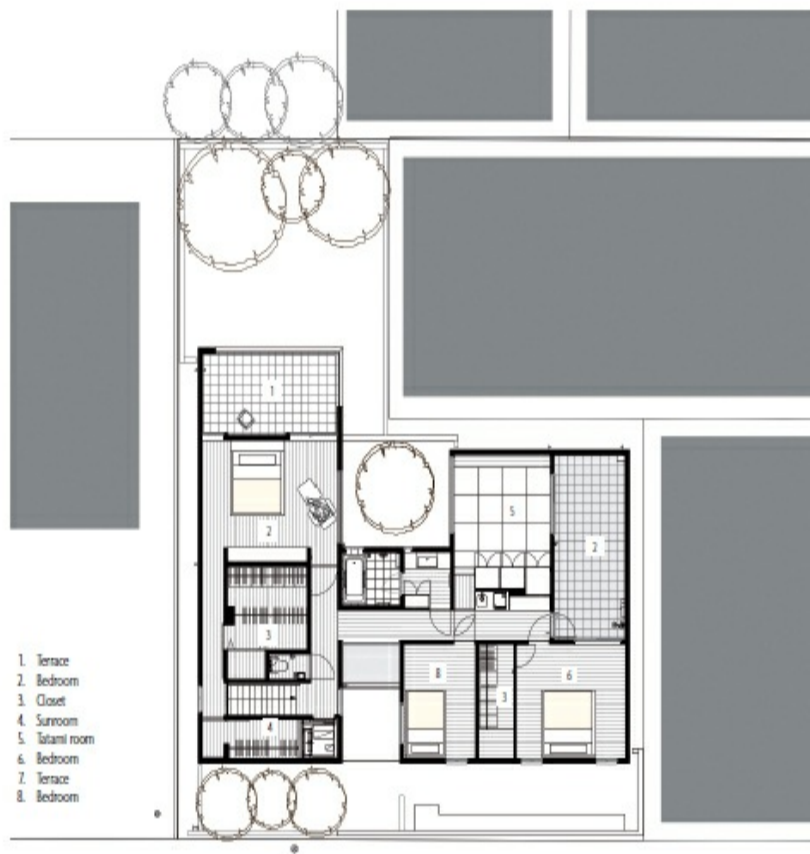
Photography: **Satoru Hirota Architects**

The special feature of this two-story Japanese house is the three patios spread around the dwelling. One is inside, another is outside, and the third is a terrace. The interior patio consists of a dry tree anchored in a small flower bed, surrounded by concrete. The combination of nature and construction material is what makes this space special.

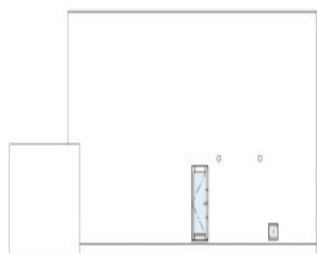




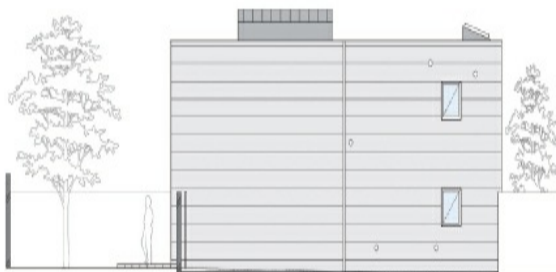
The interior patio can be seen from several areas within the house and reaches both floors. Its two glass walls and the concrete around it turn it into a sanitized space.



Floor plan



South elevation



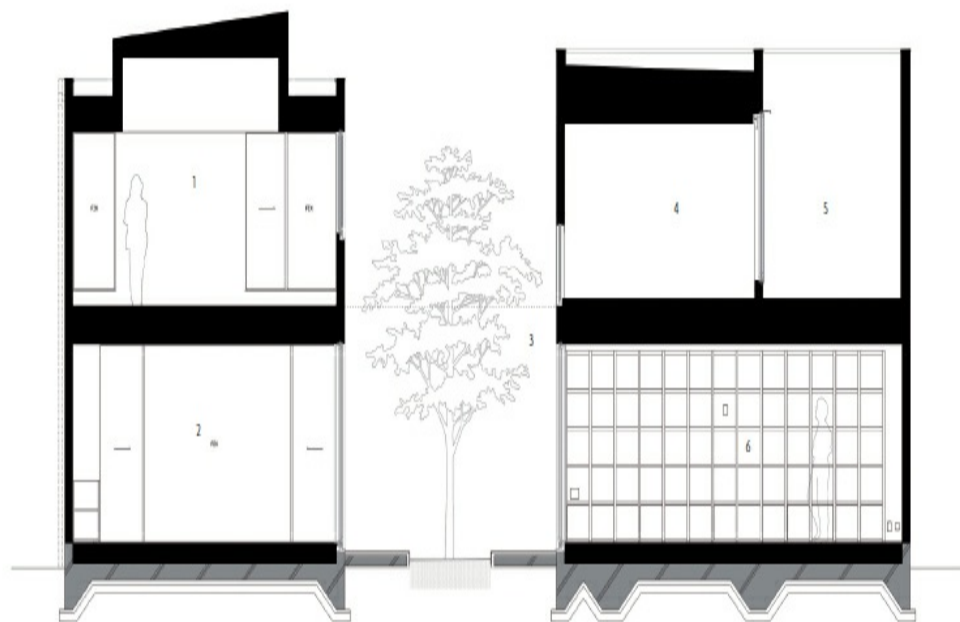
North elevation



East elevation



West elevation



Section

- | | |
|----------------|----------------|
| 1. Bedroom | 4. Tatami room |
| 2. Living room | 5. Terrace |
| 3. Garden | 6. Study room |







The other two outdoor spaces round off this curious residence. There are few plants throughout the house.



Balconies



Clarendon

Architect: **Mark English**

Location: **San Francisco, CA, USA** Photography: **Matthew Millman and Cesar Rubio** This house, located at the top of Clarendon Heights, has views of the city in almost every direction. The home boasts plenty of natural light and has been furnished by its owner, interior designer Geoffrey De Sousa. Clarendon has two outdoor spaces, a terrace and a courtyard, which are thematically connected with each other thanks to De Sousa's decoration.





The space is lit with two simple lanterns placed on the table. The orange and brown tones complement the warmth of the place.



Lanterns are used once more. The wood on the center table is distinctive and complements the gravel flooring. Together, they make the space seem more arid.



31 Blair Road

Architect: **ONG & ONG**

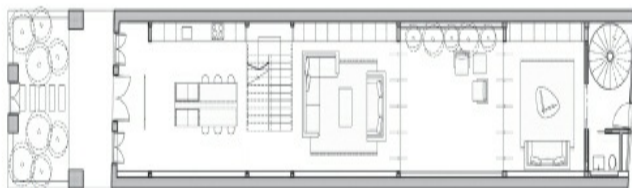
Location: **Republic of Singapore** Photography: **Tim Nolan**

The architects decided to re-form the house by remodeling the interior, leaving the exterior intact so that it would fit in with the other houses around it. One of the things that set this house apart from the others that remain from the period is the layout of its spaces and the fact that the kitchen and dining room are near the entrance.





Since social gatherings often revolve around food, the architects decided that the kitchen and dining room should be next to each other so that guests and hosts can interact.



Ground floor plan



Second floor plan



Attic floor plan



Bamboo is a recurring theme throughout the house, and this, combined with the neutral color of the walls, is ideal for rental housing in which different types of tenants may live.

Sky Garden House

Architect: **Keiji Ashizawa / Mariko Irie** Location: **Tokyo, Japan**

Photography: **Daici Ano**

This is a two-family residence in the city center. The building is designed to create two separate yet interconnected dwellings so that each family can enjoy their privacy but also interact freely. The interior of the house is presided over by a tree in an inner courtyard.

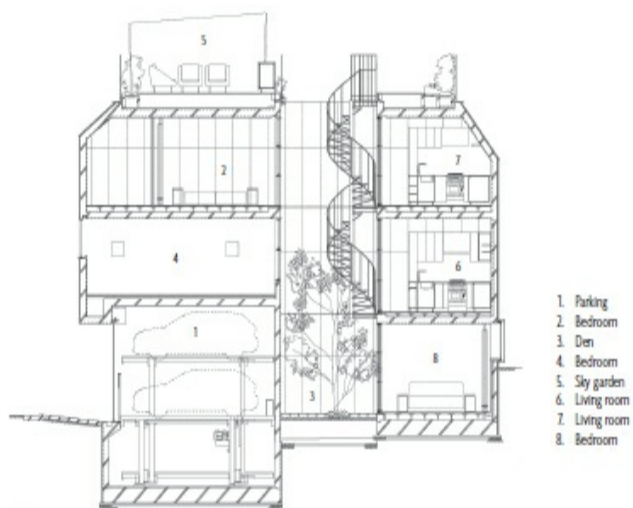




The small wooden-floored inner courtyard is surrounded by two glass walls so the tree can be seen from the bedroom and the living room.

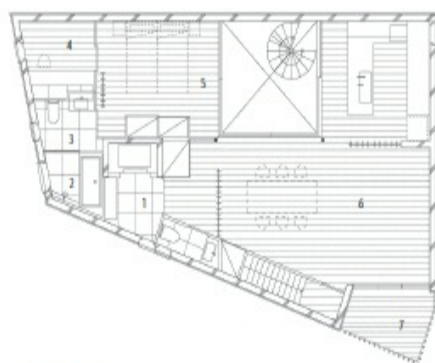






1. Parking
2. Bedroom
3. Den
4. Bedroom
5. Sky garden
6. Living room
7. Living room
8. Bedroom

Section



1. Entrance
2. Bathroom
3. Lavatory
4. Den
5. Bedroom
6. Living room
7. Balcony

Third floor plan



The spiral staircase connects the floors through the courtyard.

Pacific Heights Victorian

Architect: **Adeeni Design Group**

Location: **Pacific Heights, San Francisco, CA, USA** Photography: **Adeeni Design Group** This house was built in 1881 and has been refurbished. The clients asked for a tropical-inspired decor for the terrace. Given the small size of the space and its unusual L shape, an eating nook was designed. The cushions and parasol are customized. The fences coordinate with the rest of the house, and interior and exterior are intertwined.





The green items, such as the ceramic table, help to highlight the plants. There are flowering plants that need little maintenance, such as geraniums, peonies, and aconites.



Ático en U

Architect: **Ábaton Arquitectura** Interior design: **Batavia**

Location: **Madrid, Spain**

Photography: **Belén Imaz**

The terrace of this penthouse is designed to simulate a garden at ground level. All access areas were conceived as outdoor spaces and are decorated to give a sense of a single dwelling. The natural irrigation system uses rainwater descending from the roof to the terrace and from there to the lower terraces.





The masses of moist soil mean the terraces are a thermal insulator.



Second floor plan



Attic plan



Gramercy Town House

Architect: **Fractal Construction LLC**

Location: **New York, NY, USA**

Photography: **Eric Laignel, Paul Warchol** This three-story house in Manhattan retains its old façade, built in 1848, but is renovated inside, including its structure. The house, whose exterior walls are lined with red brick, has three bedrooms, three bathrooms, three terraces, and a roof garden. Inside, this Victorian-looking house is a work of art composed of steel, glass, and ceramics.







Roof deck plan

The impressive roof garden covers the entire roof of the building and is divided into two levels.



Casa CG

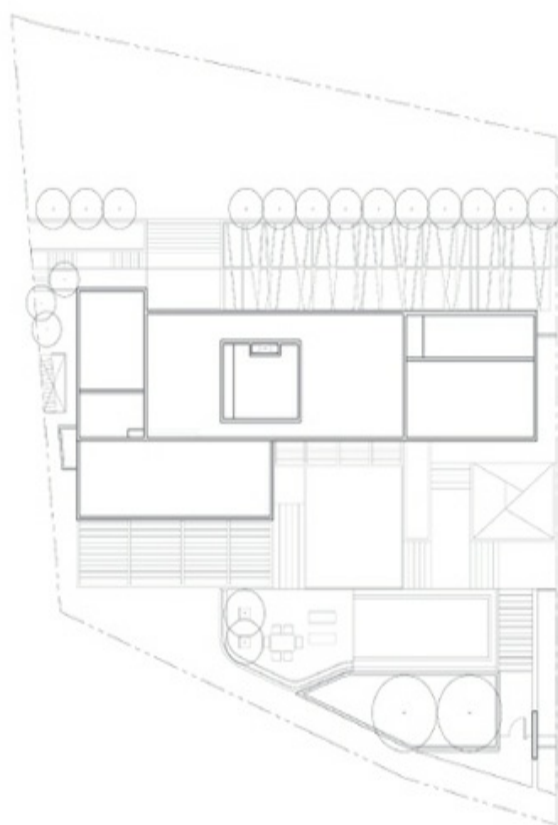
Architect: **GLR Arquitectos**

Location: **Monterrey, Nuevo León, Mexico** Photography: **Jorge Taboada**

This house stands in the foothills of the Sierra Madre. Due to the slope of the plot, the architects had to adapt the design to the location. In return, the views are fantastic and the natural lighting enviable. The entrance is dominated by two oak trees that provide privacy and shade to the pool on the upper terrace. All rooms are fitted with large windows, and the flooring ranges in elevation by area to imitate the terrain.







Ground floor plan



The house has two gardens and a terrace with a pool. The front garden is more formal, while the other, which is accessible only from inside the house, is more recreational.

The original wooden railing fulfills its function, embellishes the façade and also serves as a planter.







Curraghbeena Road House

Architect: **Luigi Rosselli, Edward Birch, and Pia Francesca** Location: **Sydney, Australia**

Photography: **Justin Alexander** This house was renovated with the addition of an L-shaped volume to the original construction, which modernizes the residence while preserving and embracing its core. Because the terrain is steep, the three stories cascade down toward the harbor, where a pool bonds the house to the sea. The large balconies and windows in the living area project the spaces toward the outside.





Rounded shapes in neutral colors give a modern look to any construction. If you also add furniture with simple lines, the result is a very minimalist space.





Sustainable Wood House in Antony

Architect: **Djuric Tardio Architectes** Landscape design: **Jeanne Dubourdieu (Atelier de paysages)** Location: **Antony, France**

Photography: **Clément Guillaume**

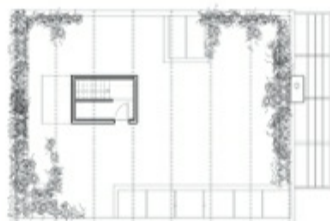
This small, self-sufficient wooden French house was designed specifically for the family that was to live in it. This involved creating several exterior spaces so that the children could enjoy the outdoors and choosing modern, functional furniture that is ideal for a young person.





A wooden arbor creates shadowed areas. The effect would be even greater if creepers were planted to climb the structure, forming a kind of natural cabin.

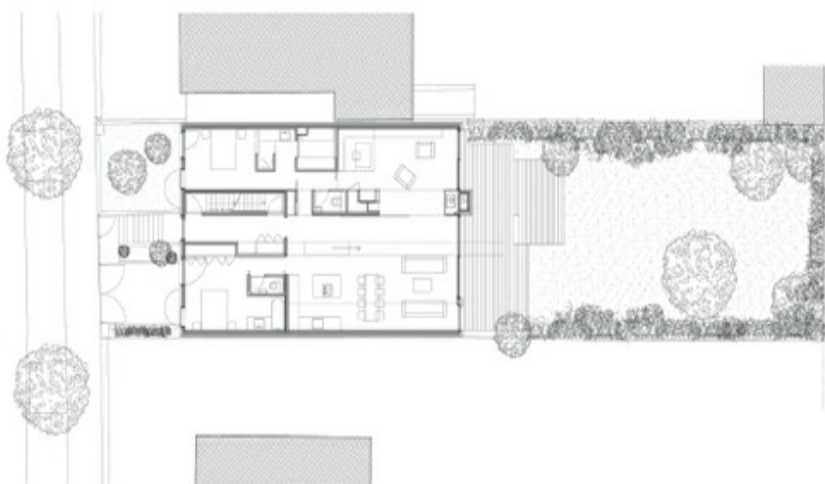




Terrace plan



Second floor plan



Ground floor plan



Longitudinal section







The entirely wooden frame of the arbor calls to mind buildings of the Old West, an effect that is reinforced with a swing made from the same material.



Static Quarry

Architect: **Takashi Fujino / Ikimono Architects** Location: **Takasaki, Japan**

Photography: **Takashi Fujino / Ikimono Architects** This house is inspired by nature and the flow of breezes. It represents them in a dynamic structure and an architectural design that employs various entrances and exits and external and internal spaces, intertwined in much the same way human beings sometimes join and sometimes move away from a crowd. Outdoor spaces are characterized by Japanese sobriety and minimalism.















This simple, bare, and unpainted concrete balcony is decorated and furnished accordingly. If the idea was to create a little contrast, a few simple touches of color would completely change the space.





Nakahouse

Architect: **XTEN Architecture / (Monika Häfelfinger, SIA; and Austin Kelly, AIA)** Location: **Hollywood Hills, CA, USA**

Photography: **Steve King**

This house is built on a hill, and the various levels between its different blocks imitate the curved shape of the site. The remodeling included opening up the exterior to the beautiful views, which had not previously been available, adding terraces to the bedroom wing, and building a large terrace to link the kitchen/dining area with the living room.

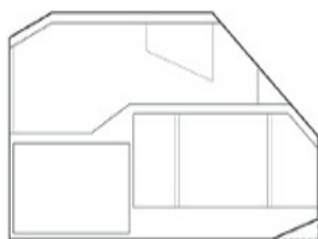
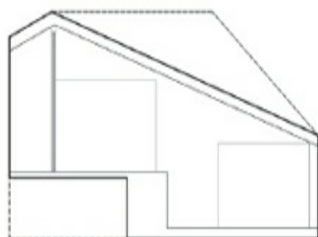
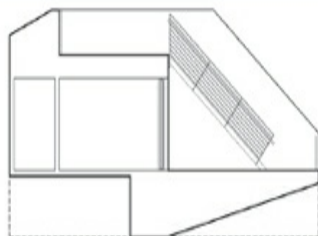




The sliding windows become doors and are concealed inside the wall, creating the feeling that they are not there. This roof garden is notable for its unexpected white color, in line with the rest of the house.



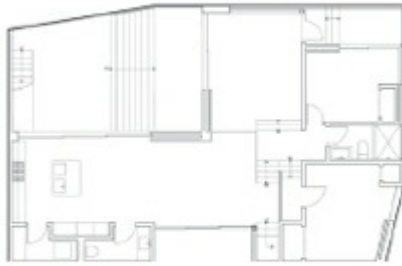
The exterior of the house is irregular in appearance, while the interior is geometric and almost aseptic. The white walls and floor and the sliding doors make the space seem unified.



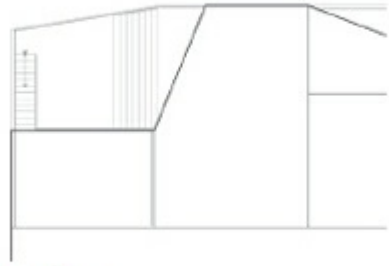
Sections



The walls, made almost entirely from glass, allow you to see in from the outside if the lights are on. The decor is complemented by the façade in form and color.



Ground floor plan



Roof plan





Vila Castela

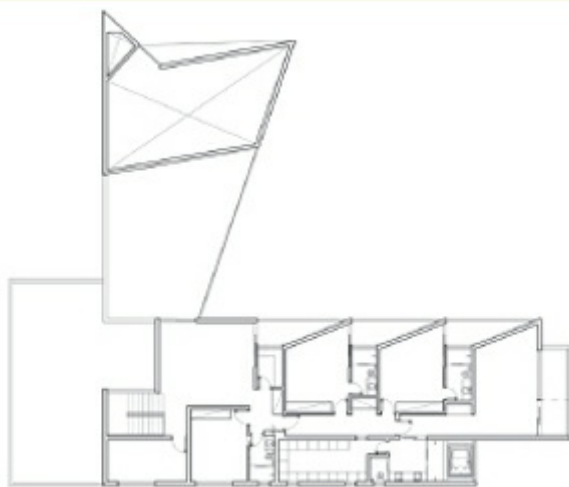
Architect: **Anastasia Arqitectos**

Location: **Nova Lima, Minas Gerais, Brazil** Photography: **Jomar Bragança**

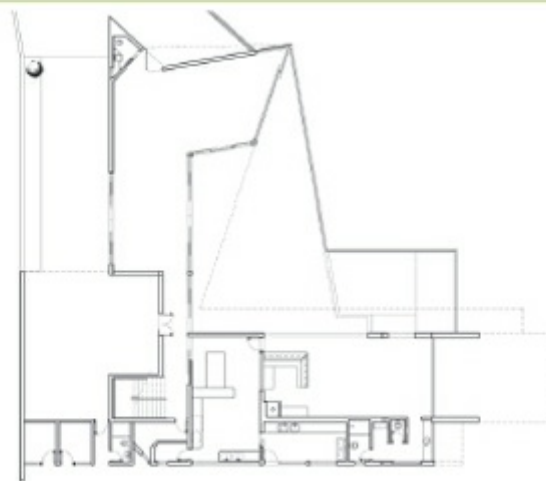
Because of good local weather, this Brazilian house needs no heating and can be oriented toward the woods. This allows a greater sense of privacy for enjoying the beauty of the surroundings. The house is nearly 23 ft. (7 m) below the street and has three floors: a basement, a first floor with a pool, and an upper floor for the bedrooms. The house is constructed from concrete.



The house is painted terracotta, which makes it easier to maintain an unblemished façade given that the local gravel contains a pink powder.



Floor plan



Floor plan







The relaxation area is entirely underneath the porch. The only uncovered part is the pool, wedged into the area closest to the drop; the pool thus contrasts with the green background.



Accessories





Make sure that wooden furniture does not get too wet, and protect it with plastic covers in winter to prevent water stains and the premature aging of the wood.













Wicker furniture lends a rustic air to an outdoor space. Its natural fiber and holes make it light and casual, and it is ideal for relaxing





Natural or synthetic? Today, many firms use very natural-looking synthetic fibers in their furniture that withstand the weather better and therefore last longer.















If you go for natural fibers, remember you have to clean them regularly to prevent dust from building up. Give them a coat of wax from time to time and put them in the shade.









Natural or artificial wickerwork is often used in classic furniture. It is increasingly found in innovative modern, original, and ergonomic products, too.







The seat and back of the chairs, which are made of rope, let air in through the structure and reduce the feeling of heat.







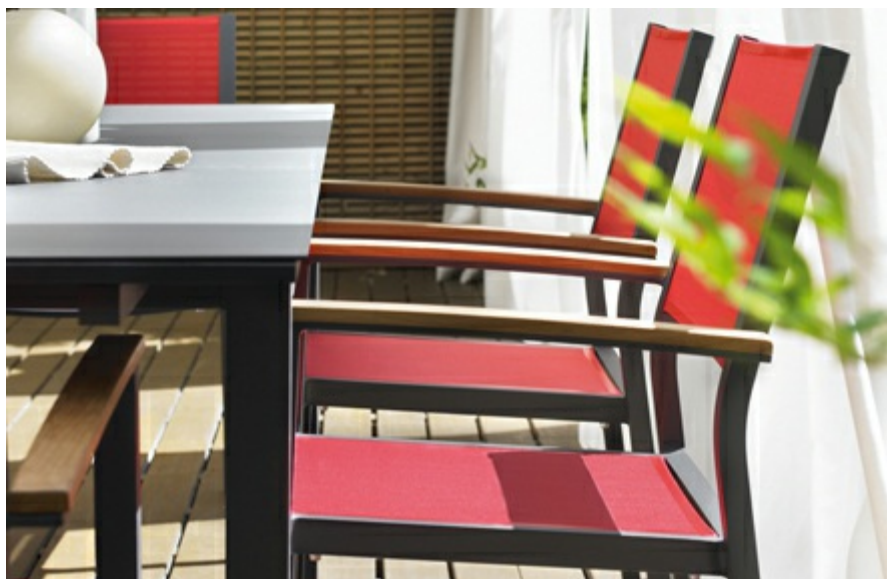
The delicacy of the structure of these sets is ideal for small spaces because the furniture is not visually bulky.





It is easy to add a touch of color to any space by taking advantage of the many furniture options available on the market. You can add accessories in similar shades.









The director's chair is an outdoor classic. Plus, because it can be folded, it can be stored almost anywhere.









Wrought iron is easy to shape, since it melts at more than 2,732°F (1,500°C) and cools and hardens quickly. This makes it especially useful for decorative items.





Rust can be removed from metal with sandpaper specifically designed for this material. If the furniture is painted, it is best to strip it before sanding with a specialized product.





Once the item is restored, protect it with antioxidant products such as red lead, which inhibits corrosion and helps set the product better. This primer can be sprayed on.







Wood or wicker furniture is easy to find and care for, and it ages attractively. Add good cushions to ensure that your couches are comfortable.











The best outdoor cushions are made of acrylic, polyester, or PVC. All these materials are water- and stain-resistant but are not protected from prolonged exposure to the sun.









Modernity also extends to outdoor furniture. Futuristic, ergonomic, and in vibrant colors, these chairs are sure to impress.







A couch with a canopy is decorative and private. It's like an outdoor bed but takes up less space, and it has a back, making it more comfortable for sitting.









If you are looking to surprise your guests, a large, round, and spectacular couch is ideal as long as you have enough space. These also tend to be very soft and comfortable.



A sun lounger is an essential item in outdoor spaces. Unlike chairs, tables, and armchairs, sun loungers encourage you to bask in the sun and relax to the full.











While perhaps not the most comfortable, wrought-iron sun loungers are aesthetically beautiful. If you have enough space, you can add a mattress lined with waterproof fabric.











Ergonomic sun loungers adjust to your body with ease, and although at first glance they may seem rigid, they are not. They fit seamlessly into terraces decorated with modern items.











A large parasol in cream shades with a wooden frame is always elegant and beautifies a space. In this case, the square shape matches the form of a table and leaves no corner unshaded.



The frame and dome of this star-shaped parasol create different levels so it does not catch in the breeze, thus preventing warping or turning inside out.



The pole of a parasol can sometimes get in the way, so side-pole parasols and ones that hang from the ceiling have been developed that can also function as outdoor lamps.







Outdoor beds are ideal for hot climates and large outdoor areas because you can sleep comfortably under the stars and enjoy your terrace twenty-four hours a day.





The role of an arbor is to create shadows to provide protection from the sun. If tall buildings surround the outdoor space, an arbor can also help enhance privacy.





If you want to add a climbing plant, the best is ivy, which is also evergreen and provides shade in summer and lets in light in winter. Bougainvillea and jasmine will add color.





If you want to cover the arbor with a tarp, there are polyester and microperforated fabrics that are breathable, easy to clean, and can be gathered like blinds.







Drapes provide side protection, can create small, enclosed spaces outdoors, and can be drawn back by just tying them with ribbons to one of the posts.





DIRECTORY

2B Group

Kiev, Ukraine

www.2bua.com

Ábaton Arquitectura

Madrid, Spain

www.abaton.es

Adeeni Design Group

San Francisco, CA, USA

www.adeenidesigngroup.com

Amir Schlezinger

London, United Kingdom

www.mylandscapes.co.uk

Anastasia Arquitetos

Belo Horizonte, Brazil

www.anastasiaarquitetos.com.br

Andrea Cochran

San Francisco, CA, USA

www.acochran.com

Andrew Wilkinson

New York, NY, USA

www.wilkinsonarchitects.com

Archipelontwerpers

Den Haag, Netherlands

www.archipelontwerpers.nl

Bercy Chen Studio

Austin, TX, USA

www.bcarc.com

Bells at Killcare

Killcare Heights, NSW, Australia www.bellsatkillcare.com.au

BNKR Arquitectura

Mexico City, Mexico

www.bunkerarquitectura.com

Design Systems Ltd.

Hong Kong, China

www.designsystems.com.hk

Djuric Tardio Architectes Paris, France

www.djuric-tardio.com

Edward Suzuki Associates Inc.

Tokyo, Japan

www.edward.net

Feldman Architecture

San Francisco, CA, USA

www.feldmanarchitecture.com

Fractal Construction LLC

New York, NY, USA

www.fractal-construction.com

Frederico Valsassina

Lisbon, Portugal

www.fvarq.com

GLR Arquitectos

Nuevo León, Mexico

www.glrarquitectos.com

Graftworks LLC

New York, NY, USA

www.graftworks.net

Greendesign

Madrid, Spain

www.greendesign.es

Herve Diseñería

Mexico City, Mexico/London, United Kingdom www.herve.com

Ikimono Architects

Takasaki, Japan

www.sites.google.com/site/ikimonokenchiku

Indio Da Costa AUDT

Rio de Janeiro, Brazil/São Paulo, Brazil www.indiodacosta.com

Jason Fort

Florida, USA

www.jasfort.carbonmade.com

JM Architects

London, United Kingdom/Manchester, United Kingdom/Glasgow, United Kingdom
www.jmarchitects.net

Keiji Ashizawa Design

Tokyo, Japan

www.keijidesign.com

Luigi Rosselli

Surry Hills, NSW, Australia

www.luigirosselli.com

Mareines + Patalano Arquitetura Rio de Janeiro, Brazil

www.mareines-patalano.com.br

Mark English Architects

San Francisco, CA, USA

www.markenglisharchitects.com

Martín Gómez Arquitectos

Punta del Este, Uruguay/Buenos Aires, Argentina www.martingomezarquitectos.com

Metropolis

Lima, Perú

www.metropolisperu.com

Molins Interiors

Barcelona, Spain

www.molinsinteriors.com

Nico van der Meulen

Johannesburg, South Africa

www.nicovdmeulen.com

Nicolas Tye Architects

Bedford, United Kingdom/London, United Kingdom/Peterborough, United Kingdom

www.nicolastyearchitects.com

Nicole Helene Designs

Vancouver, WA, USA Portland, OR, USA www.nicolehelenedesigns.com

ONG & ONG

Singapore

New York, NY, USA

www.ong-ong.com

Patrice Bideau

Auray, France

www.architectes.org/portfolios/a-typique/

Pitsou Kedem

Tel Aviv, Israel

www.pitsou.com

Roberto Silva Landscapes

London, United Kingdom

www.silvalandscapes.com

Rush/Wright Associates

Melbourne, Australia

www.rushwright.com

Satoru Hirota

Tokyo, Japan

www.hirotaa.net

Secret Gardens of Sydney

Sydney, Australia

www.secretgardens.com.au

Studio MK27

São Paulo, Brazil

www.marciokogan.com.br

Tim Davis Design

Ottawa, ON, Canada

www.timdavisdesign.com

Vértice Arquitectos

Lima, Perú

www.verticearquitectos.com

Víctor Cañas

San José, Costa Rica

www.victor.canas.co.cr

XTEN Architecture

Sissach, Switzerland

www.xtenarchitecture.com

ACCESSORIES

B&B ITALIA

Novedrate, Italy

www.bebitalia.it

GREENDESIGN

Madrid, Spain

www.greendesign.es

KETTAL

Barcelona, Spain/Coral Gables, FL, USA www.kettal.es

UNOPIÙ

Soriano nel Cimino, Italy

www.unopiù.es

Copyright

Copyright © 2013 by HARPER DESIGN and LOFT Publications 150 BEST TERRACE AND BALCONY IDEAS All rights reserved under International and Pan-American Copyright Conventions. By payment of the required fees, you have been granted the nonexclusive, nontransferable right to access and read the text of this e-book on-screen. No part of this text may be reproduced, transmitted, downloaded, decompiled, reverse-engineered, or stored in or introduced into any information storage and retrieval system, in any form or by any means, whether electronic or mechanical, now known or hereinafter invented, without the express written permission of HarperCollins e-books.

For information, address Harper Design, 10 East 53rd Street, New York, NY 10022.

First published in 2013 by:

Harper Design

An Imprint of HarperCollins Publishers 10 East 53rd Street New York, NY 10022

Tel.: (212) 207-7000

Fax: (212) 207-7654

harperdesign@harpercollins.com

www.harpercollins.com

Distributed throughout the world by: HarperCollins Publishers

10 East 53rd Street New York, NY 10022

Fax: (212) 207-7654

Editorial coordinator: Claudia Martínez Alonso Assistant to editorial coordination: Ana Marques Editor and text: Irene Alegre
Art director: Mireia Casanovas Soley Design and layout coordination: Claudia Martínez Alonso Layout: Cristina Simó Perales
Assistant to layout: Kseniya Palvinskaya, Paco Ortiz García Cover layout: Emma Termes Parera Library of Congress Control
Number: 2012951243

ISBN: 978-0-06-221028-9

EPub Edition FEBRUARY 2013 ISBN 9780062283375

About the Publisher

Australia

HarperCollins Publishers (Australia) Pty. Ltd.

Level 13, 201 Elizabeth Street Sydney, NSW 2000, Australia <http://www.harpercollins.com.au>

Canada

HarperCollins Canada

2 Bloor Street East - 20th Floor Toronto, ON, M4W, 1A8, Canada <http://www.harpercollins.ca>

New Zealand

HarperCollins Publishers (New Zealand) Limited P.O. Box 1

Auckland, New Zealand

<http://www.harpercollins.co.nz>

United Kingdom

HarperCollins Publishers Ltd.

77–85 Fulham Palace Road

London, W6 8JB, UK

<http://www.harpercollins.co.uk>

United States

HarperCollins Publishers Inc.

10 East 53rd Street

New York, NY 10022

<http://www.harpercollins.com>

Содержание

Contents	4
Introduction	6
Terraces	8
Shore Vista Boat Dock	9
Casa en Playa Palabritas	18
Abo House	27
Leaf House	36
Courtyard Garden	47
Randwick	54
Randwick II	61
Contemporary Bauhaus on the Carmel	66
Eos	72
Wiston Gardens	81
Santa María	90
Maison Bioclimatique	98
Casa 6	104
Casa a Rayas	115
La Boyita	122
Elwood House	128
Summit Drive	135
House in Estoril	140
Majadahonda	147
Mhouse	151
Axial Symphony	158
Prototype	164
Soto Moraleja	171
Villanueva	176
Casa C-24	181
Guijo	188
Steel Study	197
São Bento Residence	206

Open Box House	214
House in Campos	219
Casa Palillos E-3	226
Pacific Heights Town House	232
Bahia House	237
Dovecote Barn	245
House Lam	253
Pretty Beach House	262
Roof Gardens	269
City Rooftop	270
City Penthouse	276
Marinka	285
Regent's Park	292
Barrio Salamanca	300
Water Street House	305
SoHo Terrace	311
Almanzora	317
Filadelfia Corporate Suites	325
Casa en Las Dolomitas	334
2 Bar House	342
Ivy Street Roof Garden	351
Greenwich Roof Garden	359
Patios	366
House Like a Museum	367
Annie Residence	378
Cascading Creek House	385
House with Three Gardens	394
Balconies	404
Clarendon	405
31 Blair Road	410
Sky Garden House	415
Pacific Heights Victorian	422
Ático en U	426

Gramercy Town House	431
Casa CG	436
Curraghbeena Road House	444
Sustainable Wood House in Antony	449
Static Quarry	459
Nakahouse	469
Vila Castela	478
Accessories	485
Directory	578
Copyright	582
About the Publisher	583